

Copyright Reserved 2019 Architype Ltd. These drawings, plans, designs and specifications are subject to copyright. They must not be used, altered, reproduced or copied, in whole or in part, without the prior written consent of Architype Ltd.

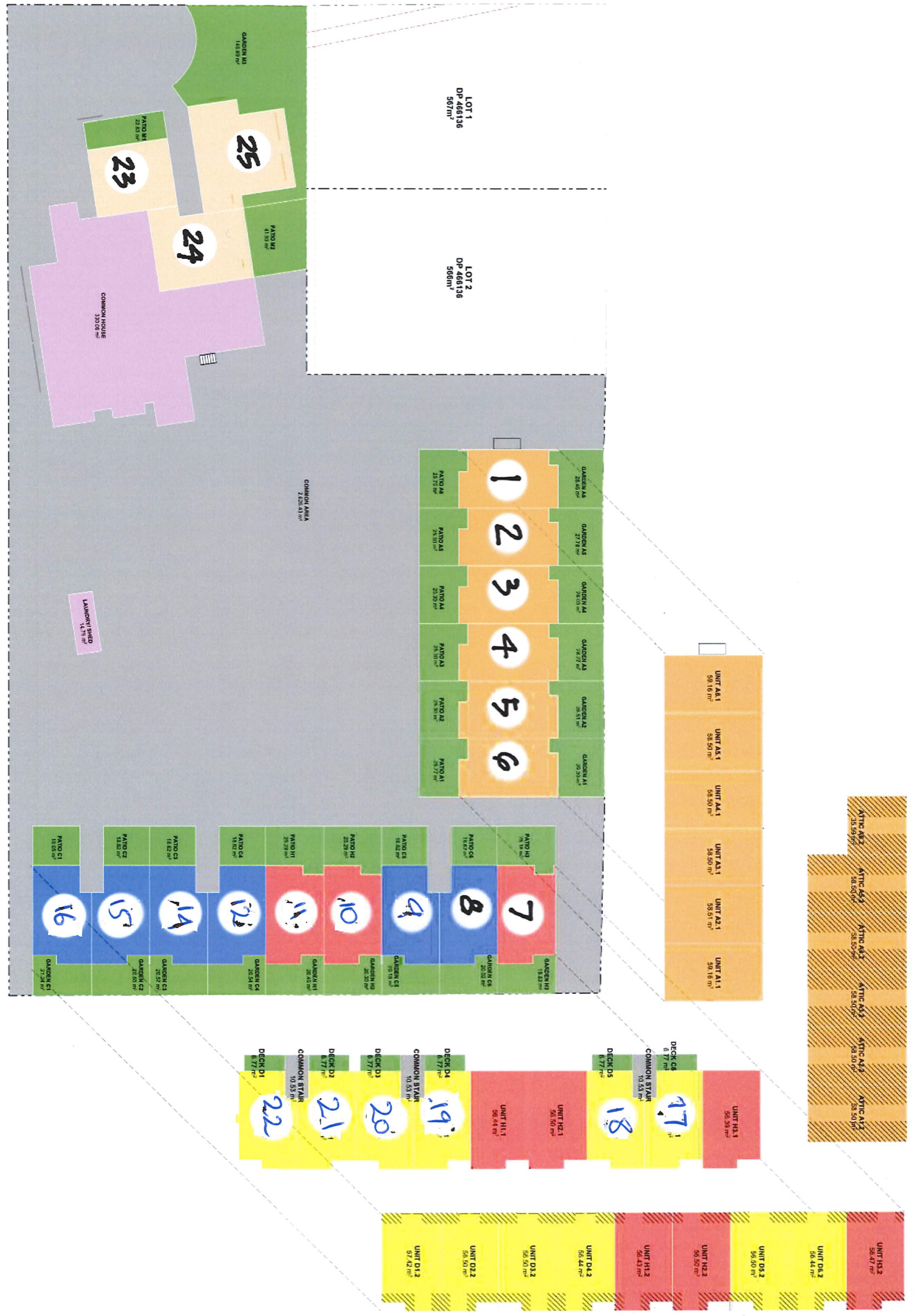
All Drawings to be read in conjunction with landscape sheet dimensions on site prior to commencing any work or making any site drawings which must be submitted for comment prior to manufacture.

| Issue | amendment | date |
|-------|--------------------|------------|
| 01 | FOR CONS REDUCTION | 18/08/2018 |

NOTES:
 THIS PLAN IS PREPARED FOR INFORMATION PURPOSES ONLY. ALL BOUNDARY DIMENSIONS AND SECTION AREA SIZES ARE SUBJECT TO FINAL SURVEY.
 THE BOUNDARIES OF ALL UNITS ARE TO THE OUTER EXTENTS OF WALL CLADDING.
 HATCHED AREAS ARE BELOW 1.5m IN HEIGHT

AREAS KEY

| | |
|-------------------------------------|------------------------|
| LAND SHAVED - 2659.43m ² | 3 268.64m ² |
| COMMON AREAS - 314.91m ² | |
| LAND PRIVATE | |
| PRIVATE UNITS A1/A6 | |
| PRIVATE UNITS I1/I1A | |
| PRIVATE UNITS C1/C2 | |
| PRIVATE UNITS C5/C8 | |
| PRIVATE UNITS M1/M2 | |



Architype Ltd.
 248 Cullen
 PO Box 5510, Duncraig Central 5055
 (03 552 0821)
 info@architype.co.nz

Project: High Street - Site Works
 7 Montpellier Street, City Rise

Unit Development Plan

| Scale | Drawn |
|------------------|-------|
| 1:400 (A1) 1:200 | TR |
| 1:402 | 01 |