



# Title Plan - LT 548630

---

**Survey Number** LT 548630  
**Surveyor Reference** 19147 High St Cohousing  
**Surveyor** Lena Kui Hayes  
**Survey Firm** TL Survey Services Ltd  
**Surveyor Declaration**

---

## Survey Details

**Dataset Description** Units over Lot 1 DP 529818 and Part Lot 2 DP 6575  
**Status** Initiated  
**Land District** Otago **Survey Class** Class A  
**Submitted Date** **Survey Approval Date**  
**Deposit Date**

---

## Territorial Authorities

Dunedin City

---

## Comprised In

RT 962004

---

## Created Parcels

Parcels	Parcel Intent	Area	RT Reference
Principal Unit 1 Deposited Plan 548630	Principal Unit		966658
Principal Unit 2 Deposited Plan 548630	Principal Unit		966659
Principal Unit 3 Deposited Plan 548630	Principal Unit		966660
Principal Unit 4 Deposited Plan 548630	Principal Unit		966661
Principal Unit 5 Deposited Plan 548630	Principal Unit		966662
Principal Unit 6 Deposited Plan 548630	Principal Unit		966663
Principal Unit 7 Deposited Plan 548630	Principal Unit		966664
Principal Unit 8 Deposited Plan 548630	Principal Unit		966665
Principal Unit 9 Deposited Plan 548630	Principal Unit		966666
Principal Unit 10 Deposited Plan 548630	Principal Unit		966667
Principal Unit 11 Deposited Plan 548630	Principal Unit		966668
Principal Unit 12 Deposited Plan 548630	Principal Unit		966669
Principal Unit 13 Deposited Plan 548630	Principal Unit		966670
Principal Unit 14 Deposited Plan 548630	Principal Unit		966671
Principal Unit 15 Deposited Plan 548630	Principal Unit		966672
Principal Unit 16 Deposited Plan 548630	Principal Unit		966673
Principal Unit 17 Deposited Plan 548630	Principal Unit		966674
Principal Unit 18 Deposited Plan 548630	Principal Unit		966675
Principal Unit 19 Deposited Plan 548630	Principal Unit		966676
Principal Unit 20 Deposited Plan 548630	Principal Unit		966677
Principal Unit 21 Deposited Plan 548630	Principal Unit		966678
Principal Unit 22 Deposited Plan 548630	Principal Unit		966679
Principal Unit 23 Deposited Plan 548630	Principal Unit		966680
Principal Unit 24 Deposited Plan 548630	Principal Unit		966681

# Title Plan - LT 548630

---

## Created Parcels

Parcels	Parcel Intent	Area	RT Reference
Accessory Unit 1A Deposited Plan 548630	Accessory Unit		966658
Accessory Unit 1B Deposited Plan 548630	Accessory Unit		966658
Accessory Unit 1C Deposited Plan 548630	Accessory Unit		Multiple
Accessory Unit 2A Deposited Plan 548630	Accessory Unit		966659
Accessory Unit 2B Deposited Plan 548630	Accessory Unit		966659
Accessory Unit 2C Deposited Plan 548630	Accessory Unit		Multiple
Accessory Unit 3A Deposited Plan 548630	Accessory Unit		966660
Accessory Unit 3B Deposited Plan 548630	Accessory Unit		966660
Accessory Unit 4A Deposited Plan 548630	Accessory Unit		966661
Accessory Unit 4B Deposited Plan 548630	Accessory Unit		966661
Accessory Unit 5A Deposited Plan 548630	Accessory Unit		966662
Accessory Unit 5B Deposited Plan 548630	Accessory Unit		966662
Accessory Unit 6A Deposited Plan 548630	Accessory Unit		966663
Accessory Unit 6B Deposited Plan 548630	Accessory Unit		966663
Accessory Unit 7A Deposited Plan 548630	Accessory Unit		966664
Accessory Unit 7B Deposited Plan 548630	Accessory Unit		966664
Accessory Unit 8A Deposited Plan 548630	Accessory Unit		966665
Accessory Unit 8B Deposited Plan 548630	Accessory Unit		966665
Accessory Unit 9A Deposited Plan 548630	Accessory Unit		966666
Accessory Unit 9B Deposited Plan 548630	Accessory Unit		966666
Accessory Unit 10A Deposited Plan 548630	Accessory Unit		966667
Accessory Unit 10B Deposited Plan 548630	Accessory Unit		Multiple
Accessory Unit 11A Deposited Plan 548630	Accessory Unit		966668
Accessory Unit 12A Deposited Plan 548630	Accessory Unit		966669
Accessory Unit 12B Deposited Plan 548630	Accessory Unit		Multiple
Accessory Unit 13A Deposited Plan 548630	Accessory Unit		966670
Accessory Unit 14A Deposited Plan 548630	Accessory Unit		966671
Accessory Unit 14B Deposited Plan 548630	Accessory Unit		Multiple
Accessory Unit 15A Deposited Plan 548630	Accessory Unit		966672
Accessory Unit 16A Deposited Plan 548630	Accessory Unit		966673
Accessory Unit 16B Deposited Plan 548630	Accessory Unit		966673
Accessory Unit 17A Deposited Plan 548630	Accessory Unit		966674
Accessory Unit 17B Deposited Plan 548630	Accessory Unit		966674
Accessory Unit 18A Deposited Plan 548630	Accessory Unit		966675
Accessory Unit 18B Deposited Plan 548630	Accessory Unit		966675
Accessory Unit 19A Deposited Plan 548630	Accessory Unit		966676
Accessory Unit 19B Deposited Plan 548630	Accessory Unit		966676
Accessory Unit 20A Deposited Plan 548630	Accessory Unit		966677
Accessory Unit 20B Deposited Plan 548630	Accessory Unit		966677
Accessory Unit 21A Deposited Plan 548630	Accessory Unit		966678
Accessory Unit 21B Deposited Plan 548630	Accessory Unit		966678
Accessory Unit 22A Deposited Plan 548630	Accessory Unit		966679
Accessory Unit 23A Deposited Plan 548630	Accessory Unit		966680



# Title Plan - LT 548630

---

## Created Parcels

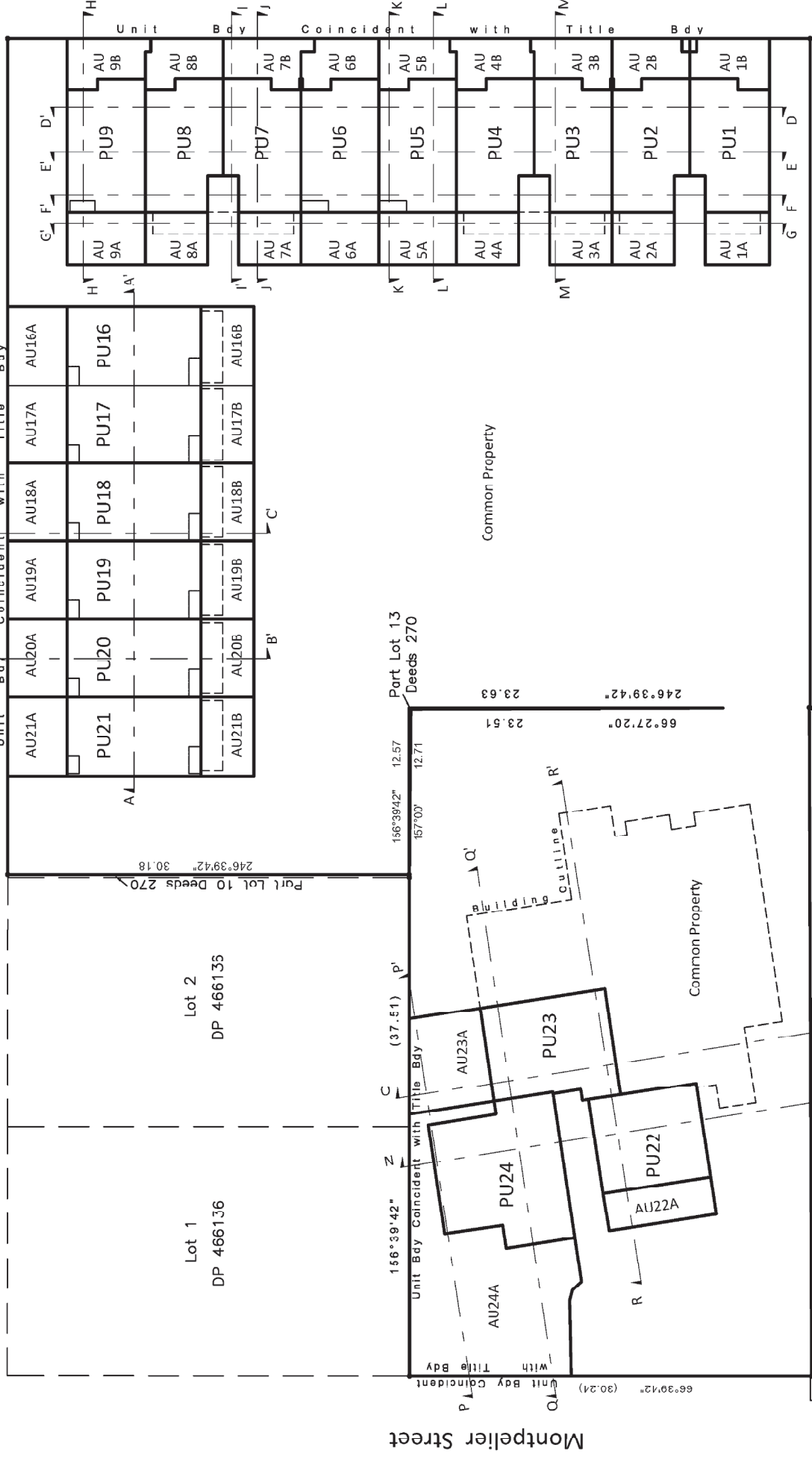
Parcels	Parcel Intent	Area	RT Reference
Accessory Unit 24A Deposited Plan 548630	Accessory Unit		966681
<b>Total Area</b>		<u>0.0000</u> Ha	

SUBJECT TO PART IVA CONSERVATION ACT 1987

Alva Street

High Street

Montpelier Street



246°39'42" (60.35)

(62.86)

336°39'42" 50.29

66°39'42" 0.07

50.33

Part Town Belt  
Town of Duendin

Note: Easements and Covenants not shown for clarity. Refer to Sheet 16.



Surveying Consultants

UNITS ON LOT 1 DP 529818  
& Pt. Lot 2 DP 6575

OVERALL PLAN  
Sheet 1 of 16

DP 548630  
Original Scale: 1:300

Job No:  
19-147

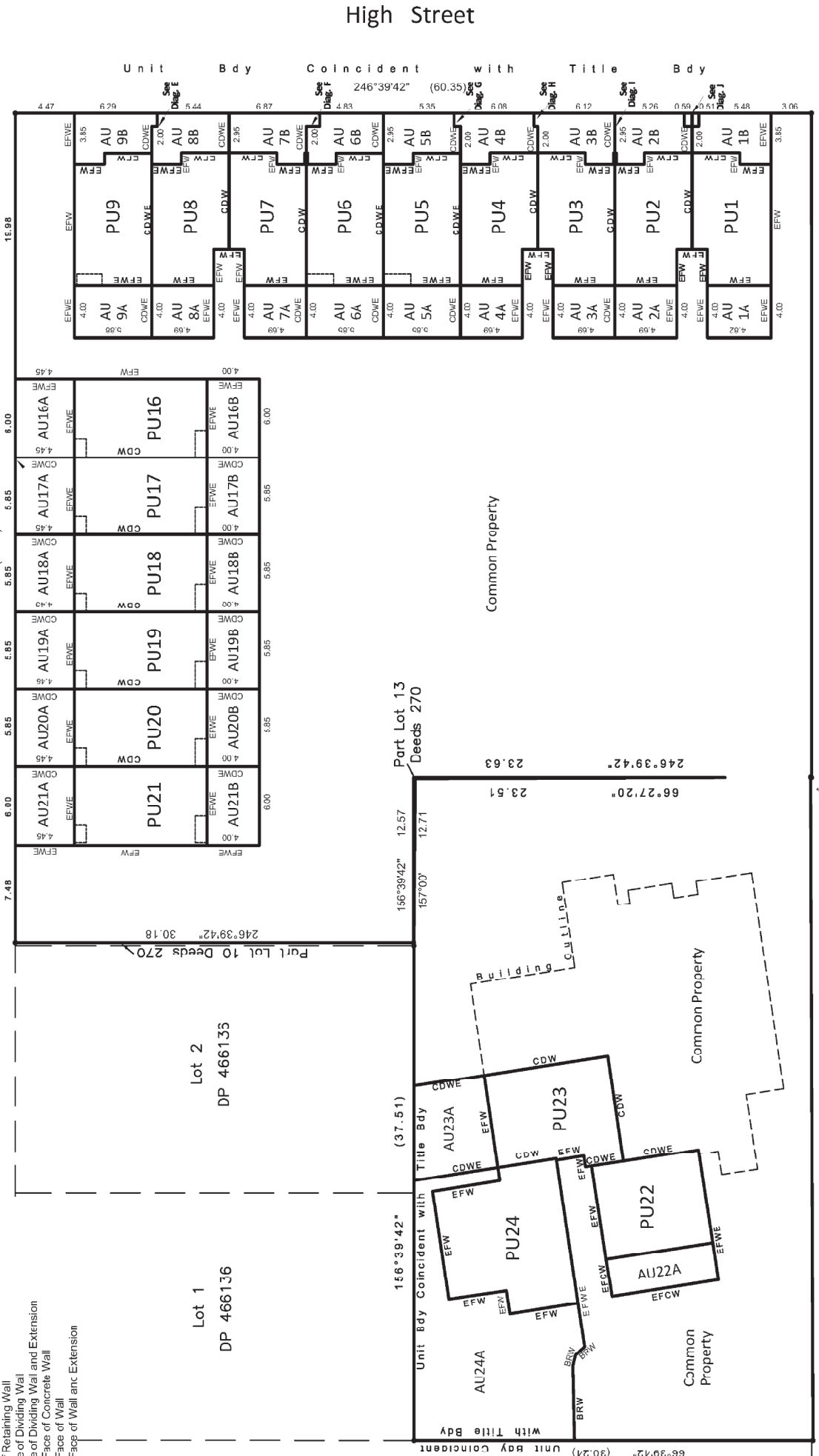
# Alva Street

# High Street

# Montpellier Street

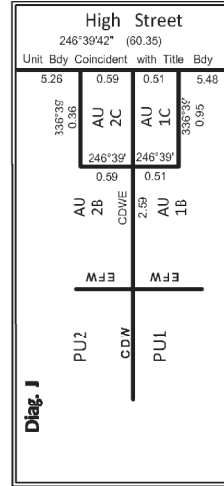
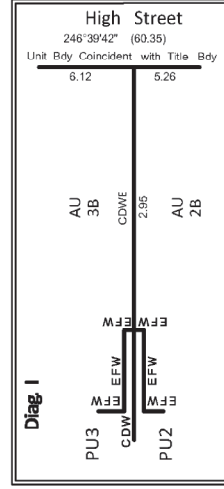
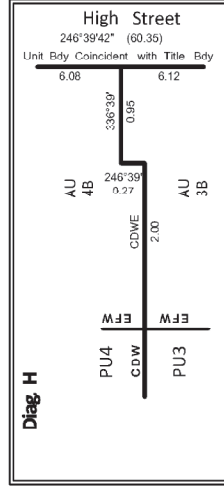
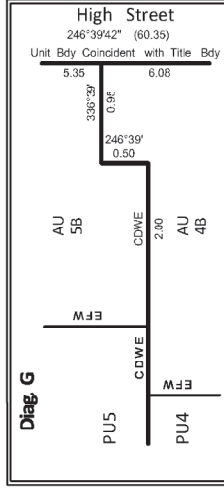
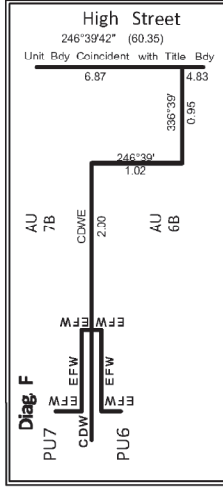
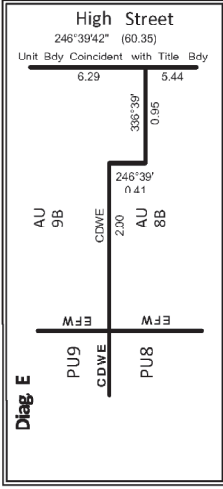
SUBJECT TO PART IVA CONSERVATION ACT 1987

NOTE:  
 Unless shown, PU boundaries are the exterior face of walls of buildings  
 BRW = Bottom of Retaining Wall  
 CDW = Centrelines of Dividing Wall  
 CDWE = Centrelines of Dividing Wall and Extension  
 EFCW = External Face of Concrete Wall  
 EFW = External Face of Wall  
 EFCWE = External Face of Wall and Extension



Unit Bdy Coincident with Title Bdy  
 246°39'42" (60.35)  
 246°39'42" (62.86)  
 156°39'42" (37.51)  
 66°39'42" (30.21)  
 66°39'42" (23.63)  
 66°27'20" (23.51)  
 336°39'42" (50.33)  
 333°39'42" (50.29)  
 Part Town Belt  
 Town of Duendin

Note: Easements and Covenants not shown for clarity. Refer to Sheet 16.



NOTE:  
 Unless shown, PU boundaries are the exterior face of walls of buildings  
 CDW = Centeline of Dividing Wall  
 CDWE = Centeline of Dividing Wall and Extension  
 EFCW = External Face of Concrete Wall  
 EFW = External Face of Wall  
 EFWE = External Face of Wall and Extension



**SUBJECT TO PART IVA CONSERVATION ACT 1987**

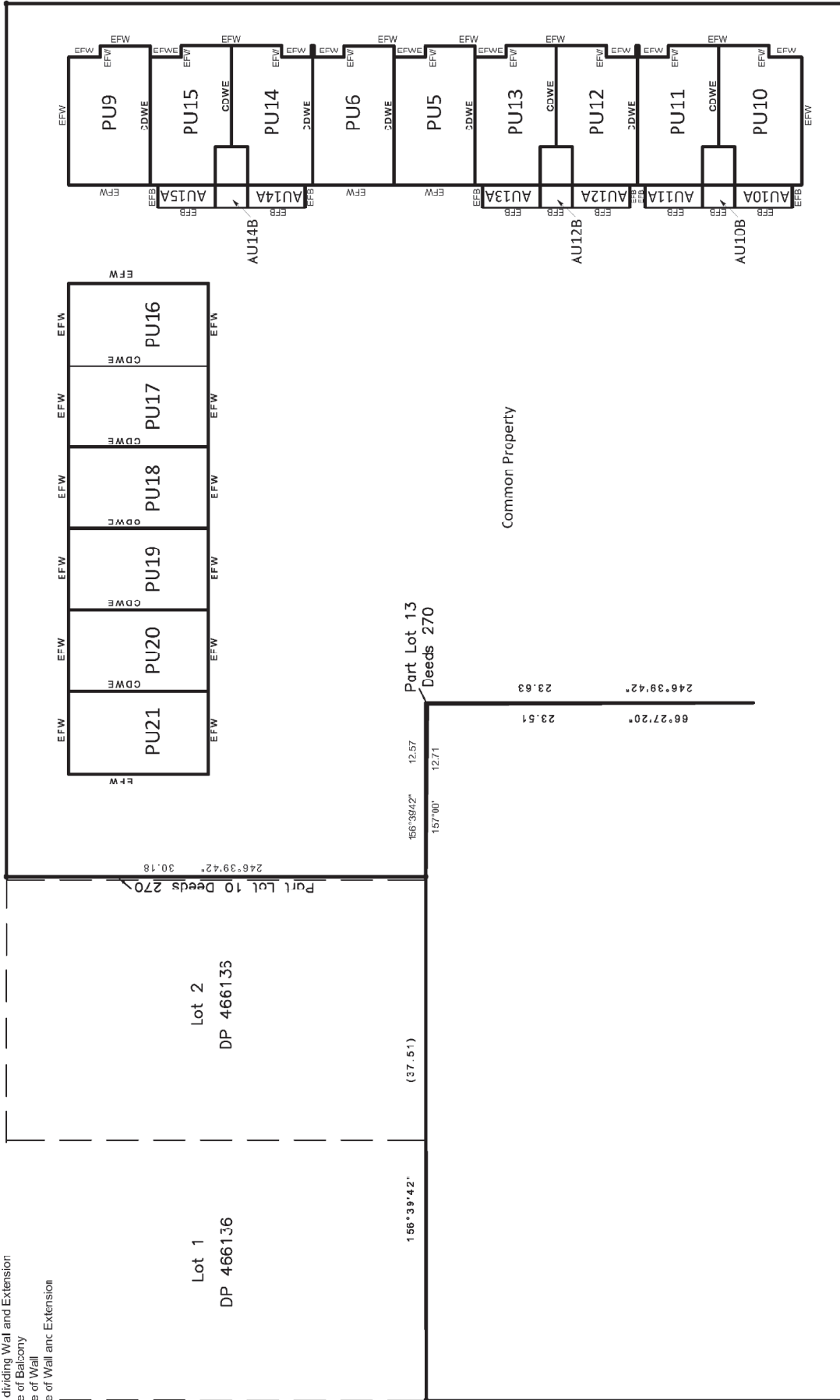
NOTE:  
 Unless shown, PU boundaries are the exterior face of walls of buildings  
 CDW = Centeline of dividing Wall  
 CDWE = Centeline of dividing Wall and Extension  
 EFB = External Face of Balcony  
 EFW = External Face of Wall  
 EFW = External Face of Wall and Extension

Alva Street

High Street

246°39'42" (60.35)

156°39'42" (62.86)



Montpeller Street

Job No:  
19-147

**DP 548630**  
Original Scale: 1:300

**FIRST FLOOR PLAN**  
Sheet 4 of 16

**UNITS ON LOT 1 DP 529818  
& Pt. Lot 2 DP 6575**

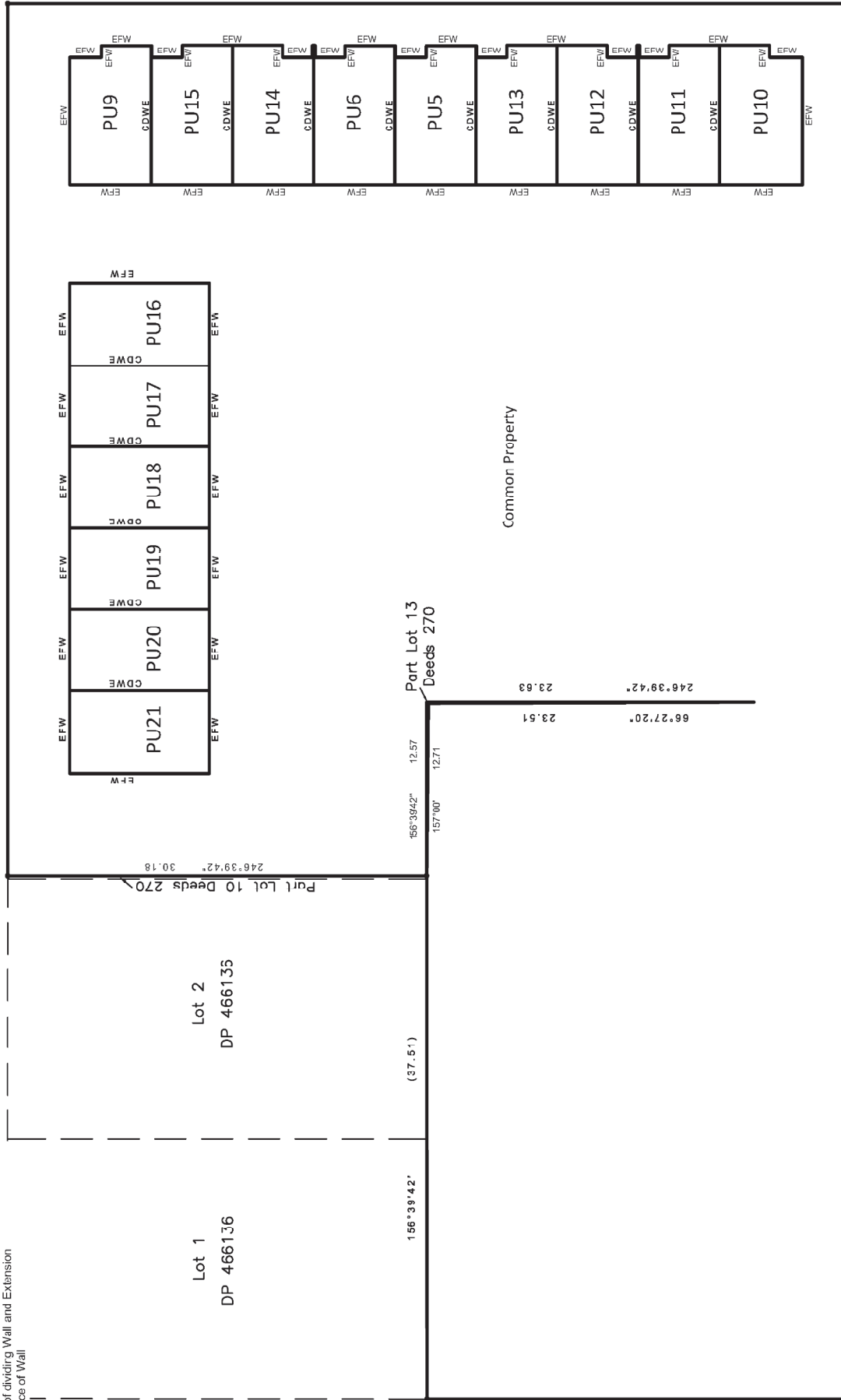
**Surveying  
Services  
Consultants**  
TL Survey Services Limited

**SUBJECT TO PART IVA CONSERVATION ACT 1987**

NOTE:  
 Unless shown, PU boundaries are the exterior faces of walls of buildings  
 CDW = Centreline of dividing Wall  
 CDWE = Centreline of dividing Wall and Extension  
 EFW = External Face of Wall

Alva Street

156°39'42" (62.86)



High Street

246°39'42" (60.35)

Montpeller Street

66°20'42" (30.24)

Part Lot 13  
Deeds 270

156°39'42" (37.51)

Lot 2  
DP 466135

Lot 1  
DP 466136

Part Lot 10 Deeds 270

246°39'42" (30.18)

157°00' (12.71)

12.57

66°27'20" (23.51)  
 246°39'42" (23.83)

Common Property

336°39'42" (50.33)

333°39'42" (50.29)

68°39'42" (0.7)

Part Town Belt  
Town of Duendin



Surveying  
Consultants

TL Survey Services Limited

UNITS ON LOT 1 DP 529818  
& Pt. Lot 2 DP 6575

SECOND FLOOR PLAN  
Sheet 5 of 16

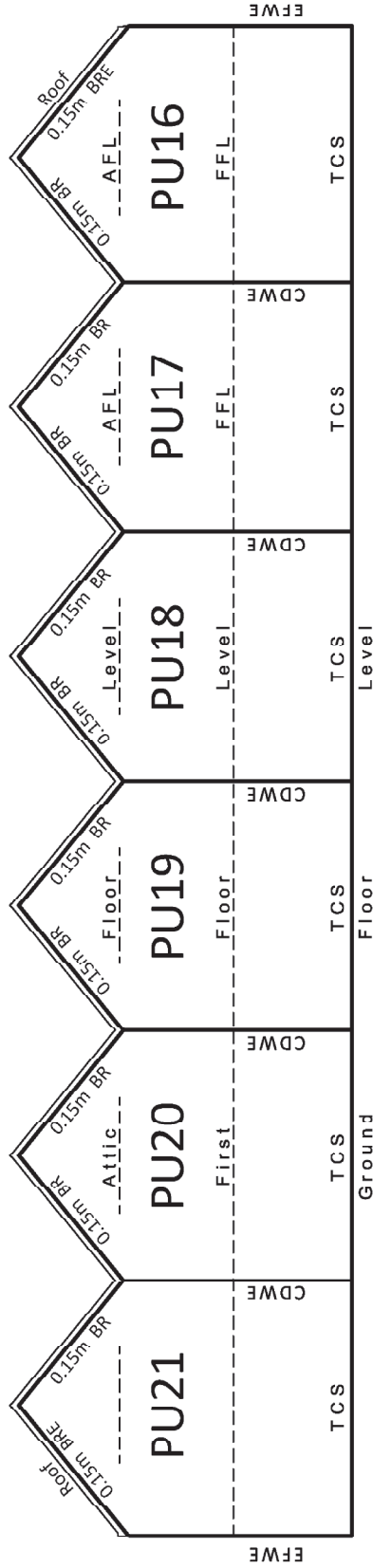
DP 548630  
Original Scale: 1:300

Job No:  
19-147



CROSS SECTION A - A'

Common Property



A

A'

Common Property

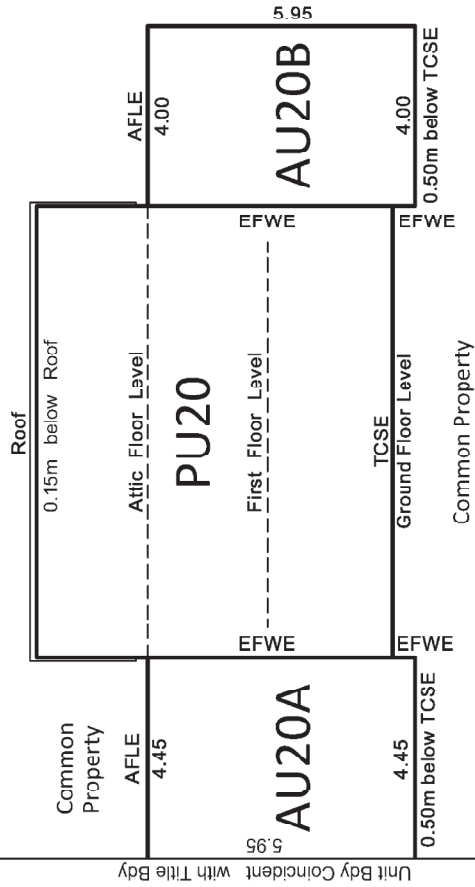
Common Property

CROSS SECTION B - B'

Common Property

B'

B



Alva Street

PU20

AU20A

AU20B

NOTE:

- Unless otherwise stated, PUs are defined by the external face of walls
- AFLE = Attic Floor Level and Extension
- BR = Below Roof (cladding)
- BRE = Below Roof (cladding) and Extension
- CDW = Centraline of Dividing Wall
- CDWE = Centraline of Dividing Wall and Extension
- EFW = External Face of Wall
- EFWE = External Face of Wall and Extension
- TCS = Top of Concrete Slab
- TCSE = Top of Concrete Slab and Extension

This cross section applies to PU16 - PU21 also



Surveying Consultants

TL Survey Services Limited

UNITS ON LOT 1 DP 529818 & Pt. Lot 2 DP 6575

CROSS SECTIONS A - A' & B - B' SHEET 6 OF 16

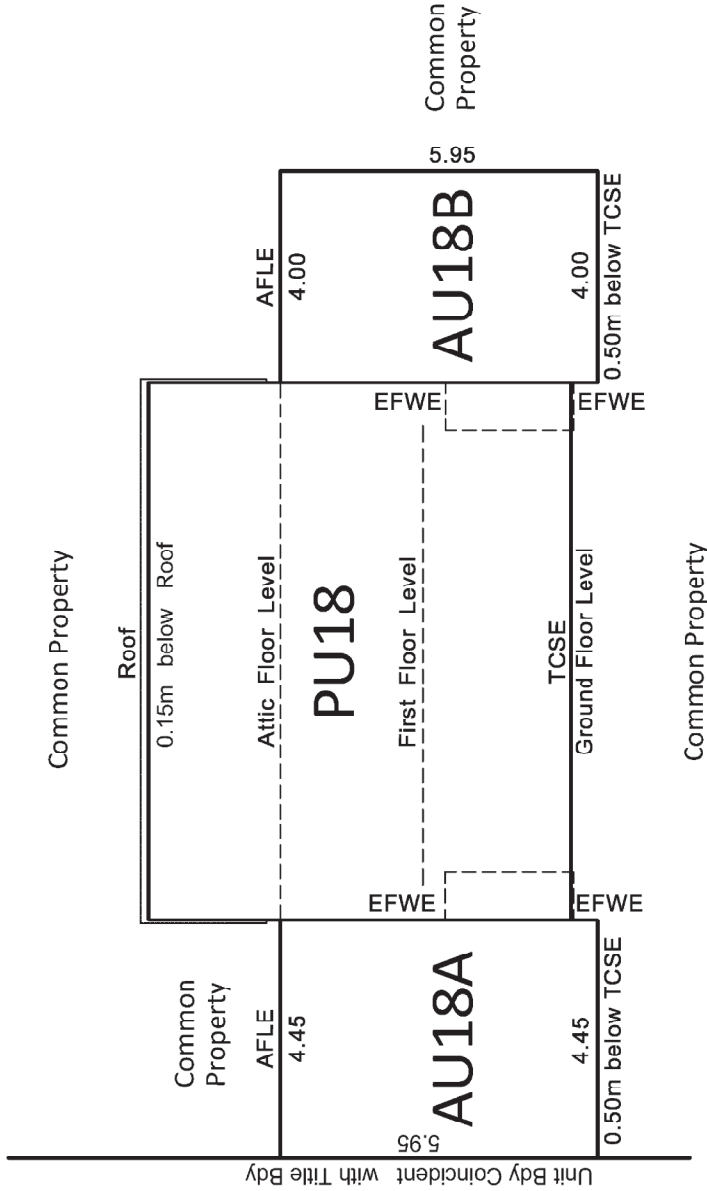
DP 548630

Original Scale: 1:100

Job No: 19-194

C

C'



Alva Street

NOTE:  
 Unless otherwise stated, PUs are defined by the external face of walls  
 AFLE = Attic Floor Level and Extension  
 BR = Below Roof (cladding)  
 BRE = Below Roof (cladding) and Extension  
 CDW = Centreline of Dividing Wall  
 CDWE = Centreline of Dividing Wall and Extension  
 EFW = External Face of Wall  
 EFWE = External Face of Wall and Extension  
 TCS = Top of Concrete Slab  
 TCSE = Top of Concrete Slab and Extension

This cross section applies to PU16 - PU21 also



Surveying  
 Consultants

TL Survey Services Limited

UNITS ON LOT 1 DP 529818  
 & Pt. Lot 2 DP 6575

CROSS SECTION  
 C-C'  
 SHEET 7 OF 16

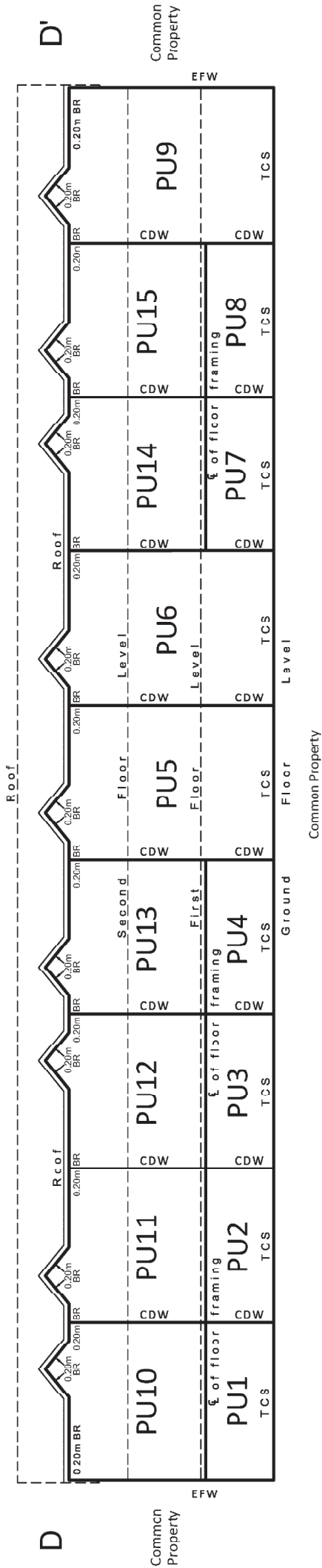
DP 548630  
 Original Scale: 1:100

Job No:  
 19-194

SUBJECT TO PART IVA CONSERVATION ACT 1987

CROSS SECTION D - D'

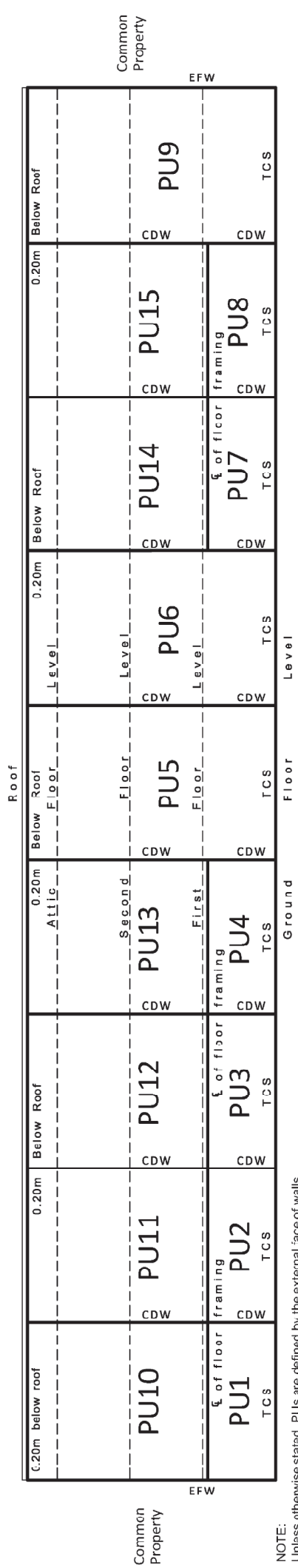
Common Property



E

CROSS SECTION E - E'

Common Property



NOTE:  
 Unless otherwise stated, PUs are defined by the external face of walls  
 BR = Below Roof (cladding)  
 CDW = Centreline of Dividing Wall  
 EFW = External Face of Wall  
 EFWE = External Face of Wall and Extension  
 TCS = Top of Concrete Slab  
 TCSE = Top of Concrete Slab and Extension



Surveying  
 Consultants

UNITS ON LOT 1 DP 529818  
 & Pt. Lot 2 DP 6575

CROSS SECTIONS  
 D - D' & E - E'  
 SHEET 8 OF 16

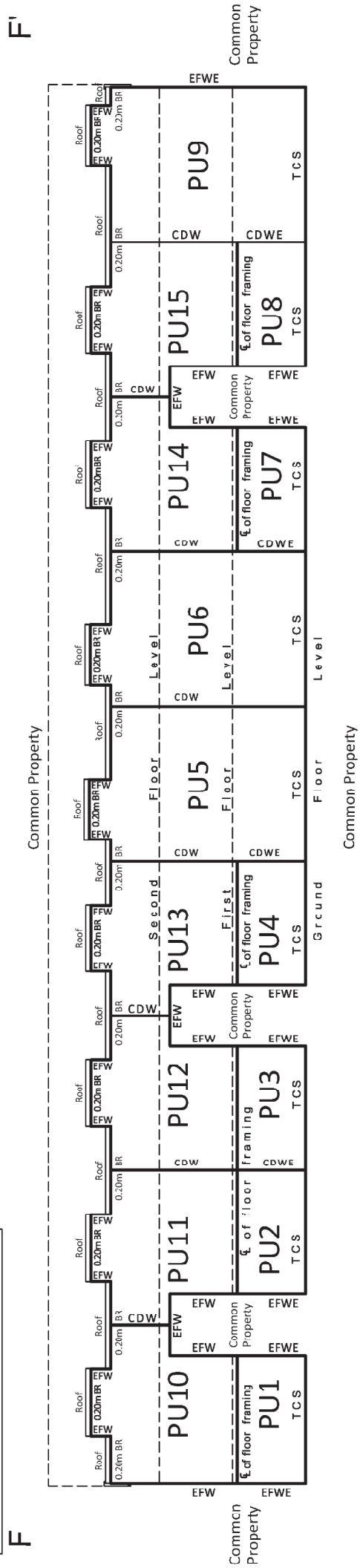
DP 548630  
 Original Scale: 1:150

Job No:  
 19-194

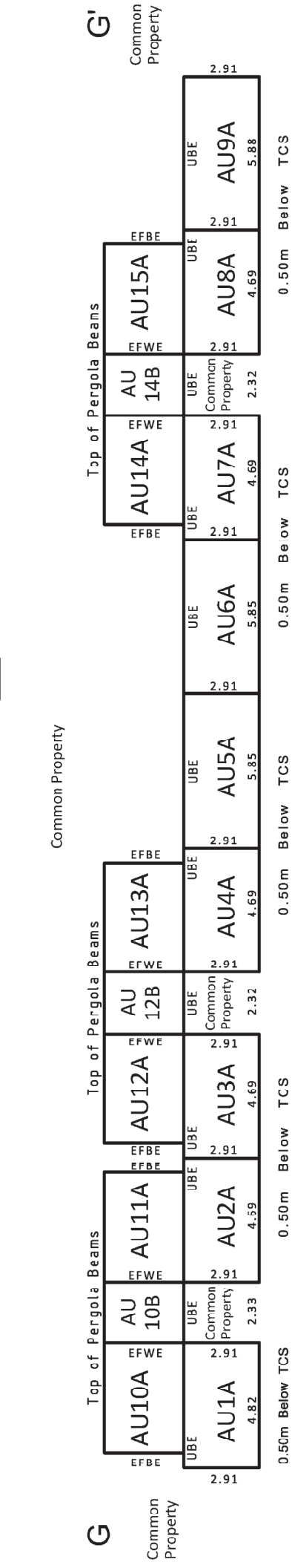
Survey  
 Services  
 Consultants  
 TL Survey Services Limited

CROSS SECTION F - F'


SUBJECT TO PART IVA CONSERVATION ACT 1987



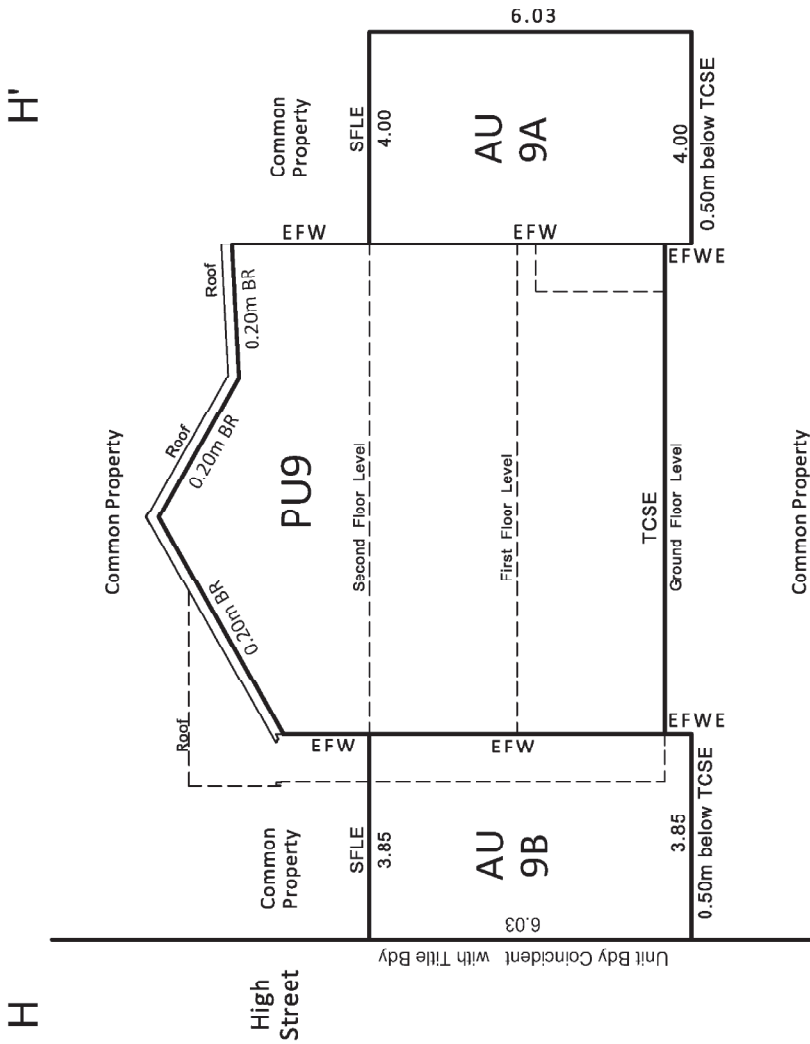
CROSS SECTION G - G'



NOTE:  
 Unless otherwise stated, PUs are defined by the external face of walls  
 BR = Below Roof (cladding)  
 CDW = Centreline of Dividing Wall  
 CDWE = Centreline of Dividing Wall and Extension  
 CPFE = Centreline of Patio Fence and Extension  
 EFBE = External Face of Beam and Extension  
 EFWE = External Face of Wall  
 EFWE = External Face of Wall and Extension  
 TCS = Top of Concrete Slab  
 UBE = Underside of Balcony and Extension

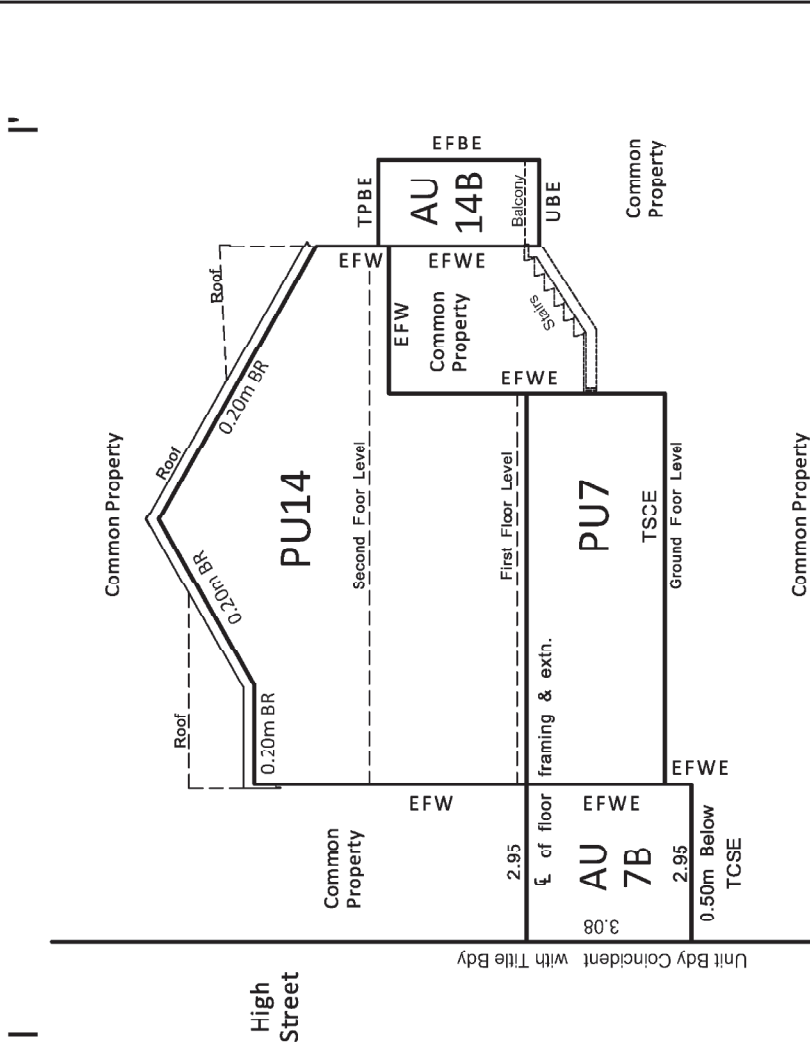
 Survey Services Consultants TL Survey Services Limited	UNITS ON LOT 1 DP 529818 & Pt. Lot 2 DP 6575	CROSS SECTIONS F - F' & G - G' SHEET 9 OF 16	DP 548630 Original Scale: 1:150
			Job No: <b>19-194</b>

CROSS SECTION H - H'



This cross section applies to PU5, PU6 & PU9

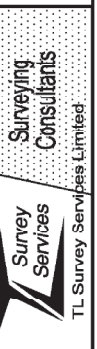
CROSS SECTION I - I'



This cross section applies to PU1 - PU4, PU7, PU8, PU10 - PU15

SUBJECT TO PART IVA CONSERVATION ACT 1987

- NOTE:
- Unless otherwise stated, PUs are defined by the external face of walls
  - BR = Below Roof (cladding)
  - CDW = Centreline of Dividing Wall
  - EFBE = External Face of Beam and Extension
  - EFW = External Face of Wall
  - EFWE = External Face of Wall and Extension
  - SFLE = Second Floor Level and Extension
  - TCS = Top of Concrete Slab
  - TCSE = Top of Concrete Slab and Extension
  - TPBE = Top of Pergola Beams and Extension
  - UBE = Underside of Balcony and Extension



UNITS ON LOT 1 DP 529818 & Pt. Lot 2 DP 6575

CROSS SECTIONS H - H' & I - I' SHEET 10 OF 16

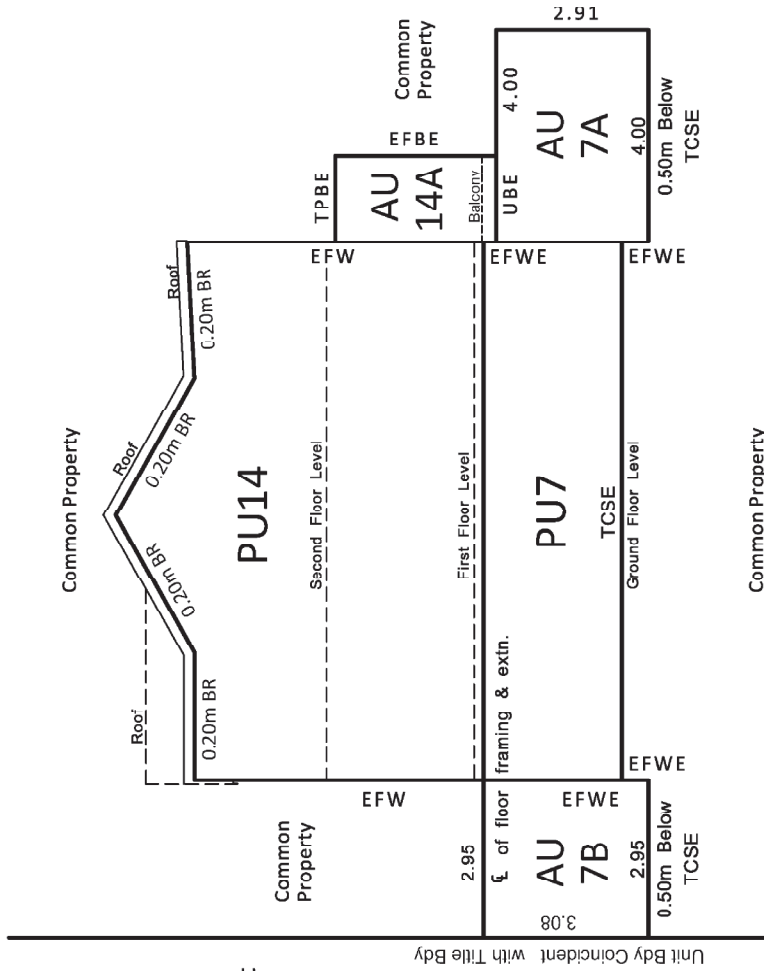
DP 548630 Original Scale: 1:100

Job No: 19-194

CROSS SECTION J - J'

J'

K



SUBJECT TO PART IVA CONSERVATION ACT 1987

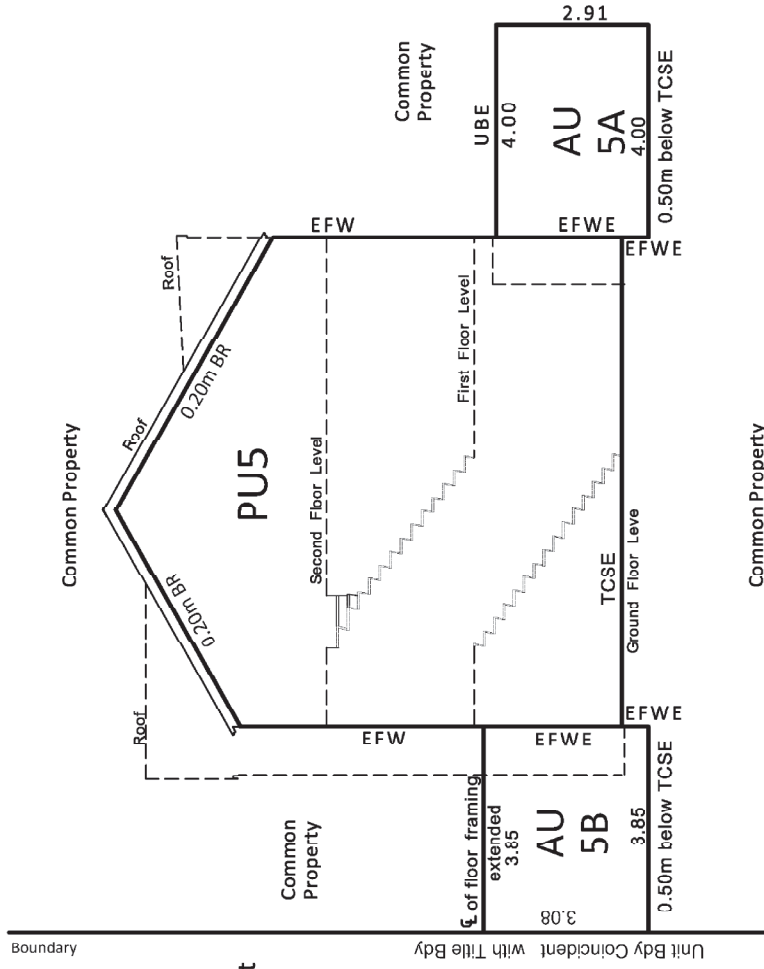
NOTE:  
 Unless otherwise stated, PUs are defined by the external face of walls  
 BR = Below Roof (cladding)  
 CDW = Centreline of Dividing Wall  
 EFW = External Face of Wall  
 EFWE = External Face of Wall and Extension  
 TCS = Top of Concrete Slab  
 TCSE = Top of Concrete Slab and Extension  
 TPBE = Top of Pergola Beams and Extension  
 UBE = Underside of Balcony and Extension

This cross section applies to PU1 - PU4, PU7, PU8, PU10 - PU15

CROSS SECTION K - K'

K'

K



This cross section applies to PU5, PU6 & PU9



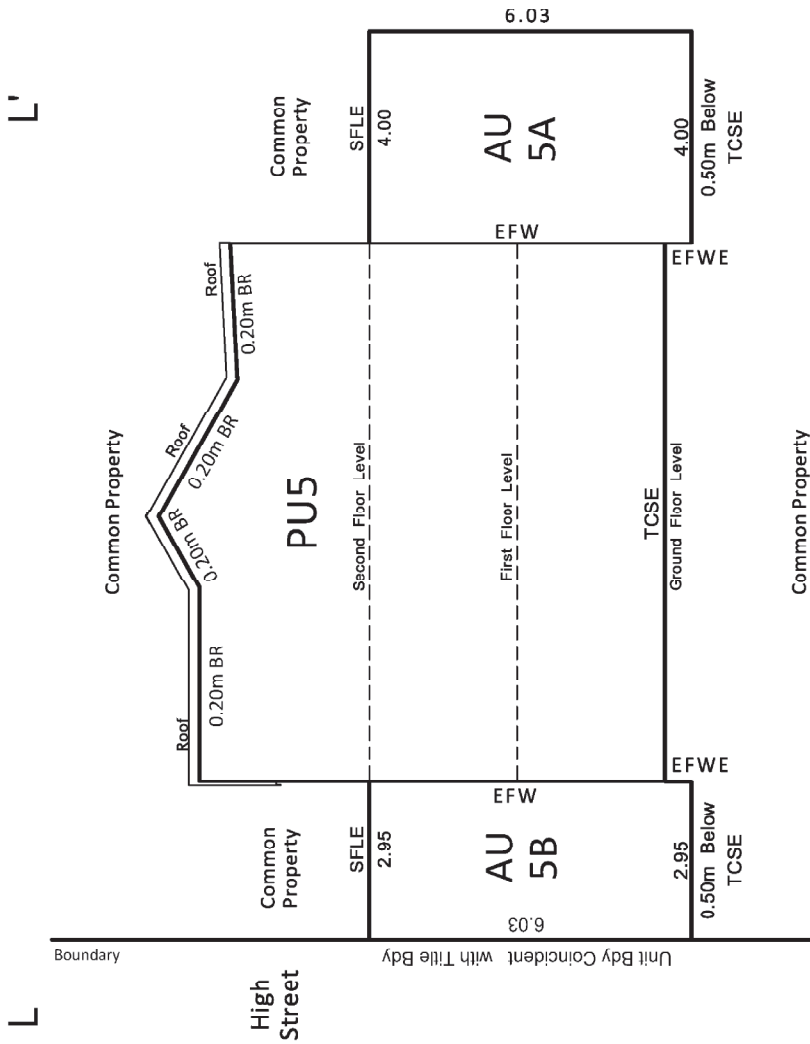
UNITS ON LOT 1 DP 529818  
 & Pt. Lot 2 DP 6575

CROSS SECTIONS  
 J - J' & K - K'  
 SHEET 11 OF 16

DP 548630  
 Original Scale: 1:100

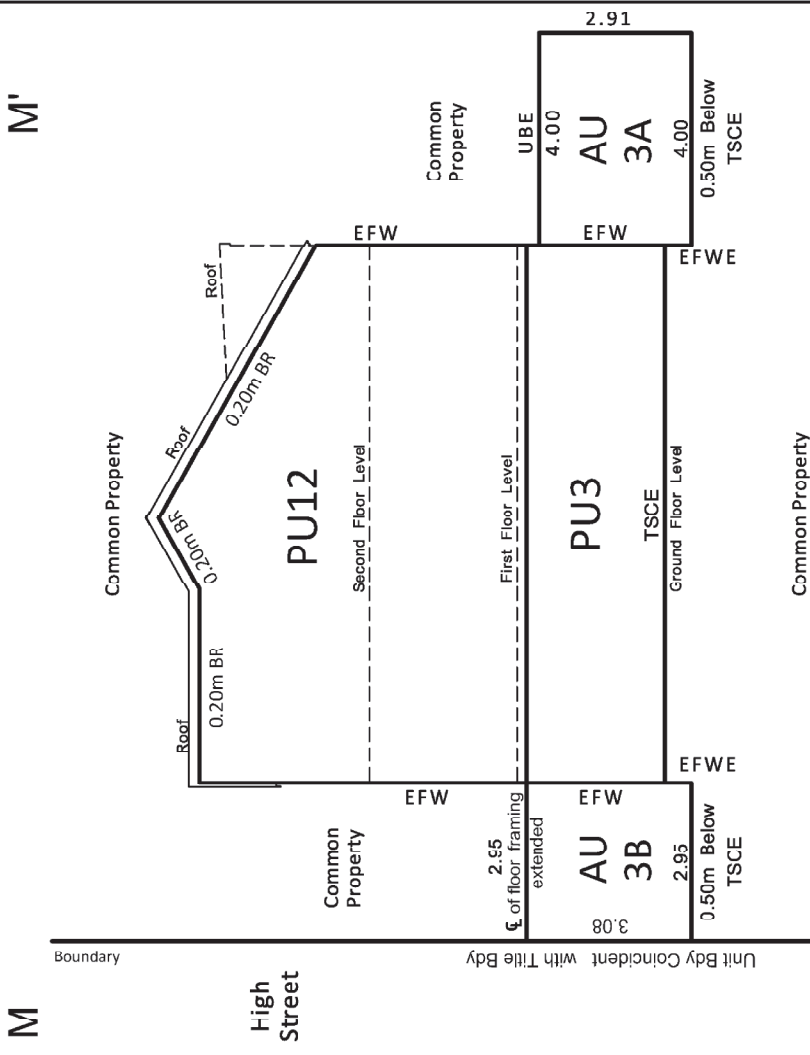
Job No:  
 19-194

CROSS SECTION L-L'



This cross section applies to PU5, PU6 & PU9

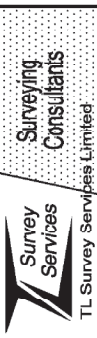
CROSS SECTION M-M'



This cross section applies to PU1 - PU4, PU7, PU8, PU10 - PU15

SUBJECT TO PART IVA CONSERVATION ACT 1987

NOTE:  
 Unless otherwise stated, PUs are defined by the external face of walls  
 BR = Below Roof (cladding)  
 CDW = Centreline of Dividing Wall  
 EFBE = External Face of Beam and Extension  
 EFW = External Face of Wall  
 EFWE = External Face of Wall and Extension  
 SFLE = Second Floor Level and Extension  
 TCS = Top of Concrete Slab  
 TCSE = Top of Concrete Slab and Extension  
 UBE = Underside of Balcony and Extension



UNITS ON LOT 1 DP 529818  
 & Pt. Lot 2 DP 6575

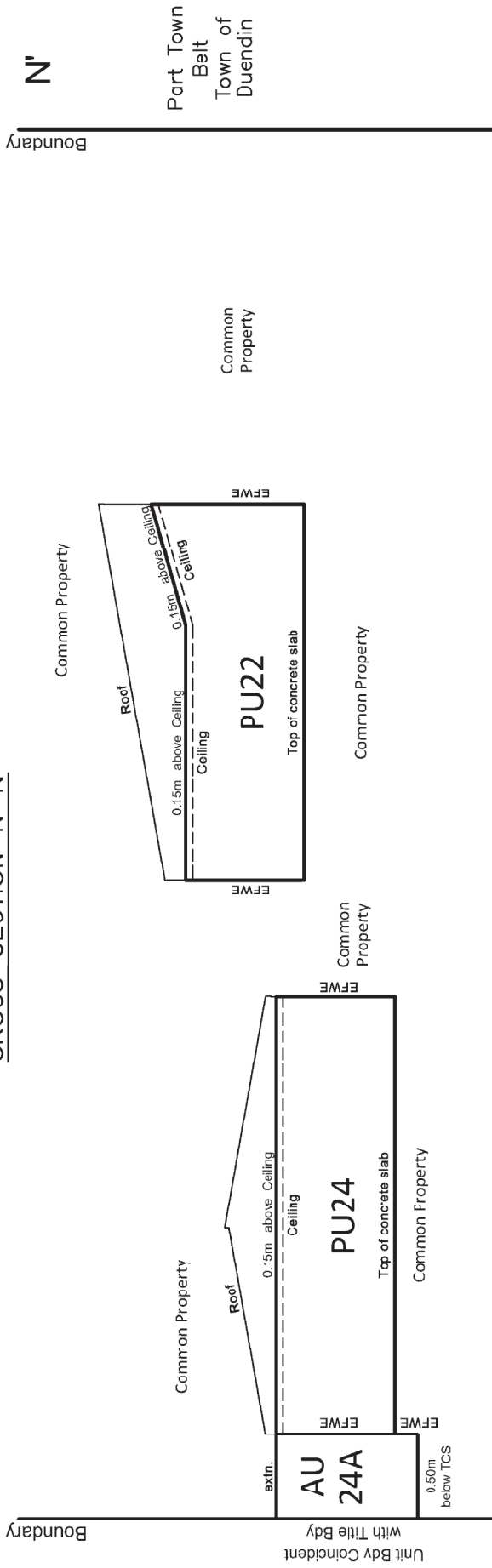
CROSS SECTIONS  
 L-L' & M-M'  
 SHEET 12 OF 16

DP 548630  
 Original Scale: 1:100

Job No:  
 19-194

SUBJECT TO PART IVA CONSERVATION ACT 1987

CROSS SECTION N - N'



N

Lot 1  
DP 466136

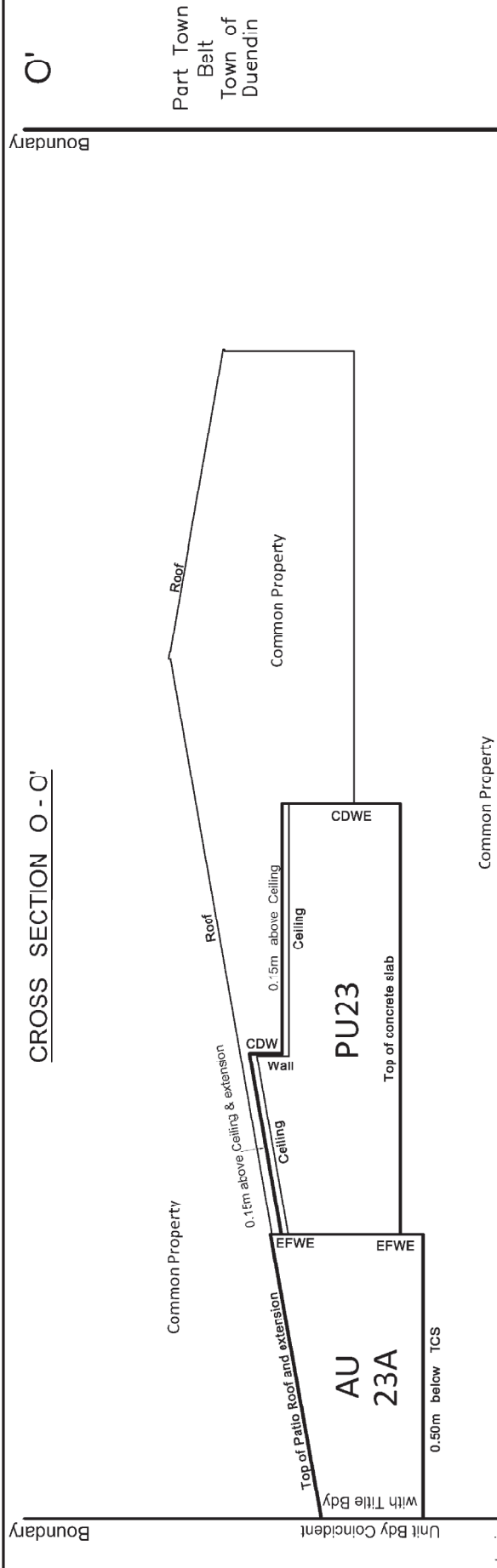
N'

Part Town Belt  
Town of Duendin

O

Lot 2  
DP 466136

CROSS SECTION O - O'



O'

Part Town Belt  
Town of Duendin

- CDW = Centreline of Dividing Wall
- CDWE = Centreline of Dividing Wall and Extension
- EFW = External Face of Wall
- EFWE = External Face of Wall and Extension
- TCS = Top of Concrete Slab
- TCSE = Top of Concrete Slab and Extension



Surveying  
Consultants

TL Survey Services Limited

UNITS ON LOT 1 DP 529818  
& Pt. Lot 2 DP 6575

CROSS SECTIONS  
N - N' & O - O'  
SHEET 13 OF 16

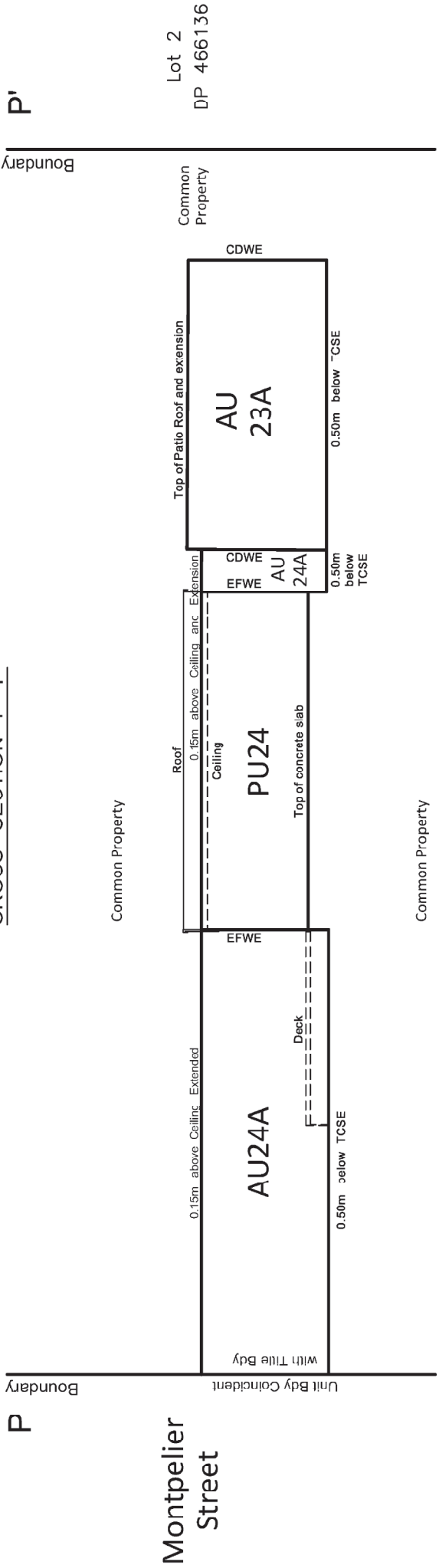
DP 548630  
Original Scale: 1:100

Job No:  
19-194

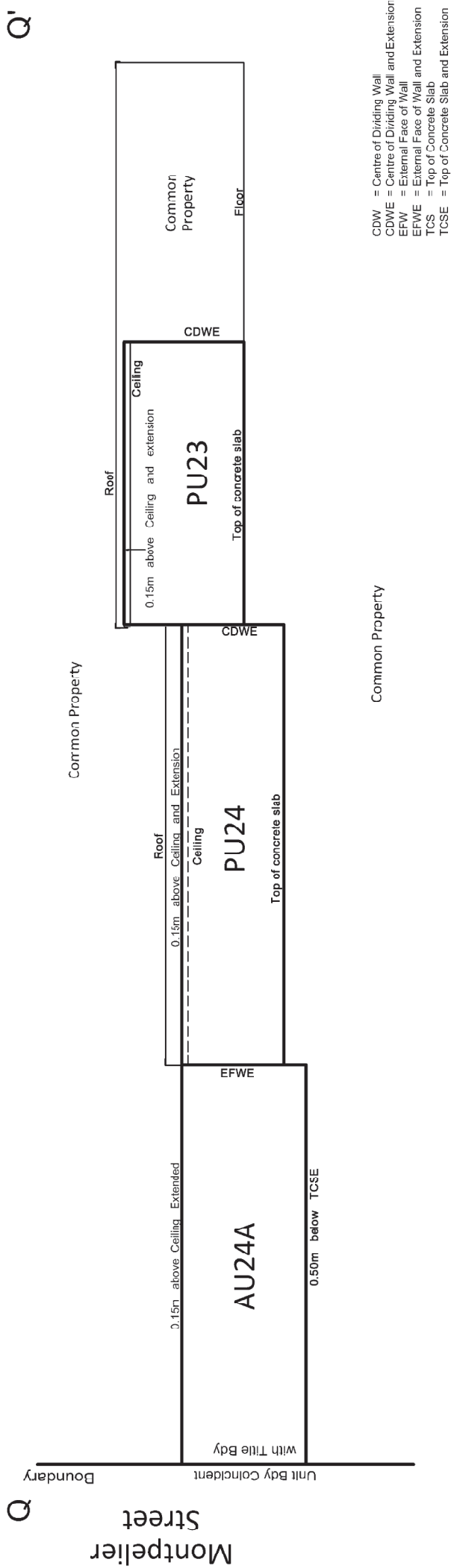


SUBJECT TO PART IVA CONSERVATION ACT 1987

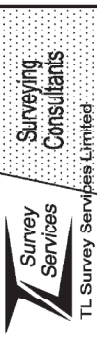
CROSS SECTION P - P'



CROSS SECTION Q - Q'



CDW = Centre of Dividing Wall  
 CDWE = Centre of Dividing Wall and Extension  
 ERW = External Face of Wall  
 EFWE = External Face of Wall and Extension  
 TCS = Top of Concrete Slab  
 TCSE = Top of Concrete Slab and Extension



UNITS ON LOT 1 DP 529818  
 & Pt. Lot 2 DP 6575

CROSS SECTIONS  
 P - P' & Q - Q'  
 SHEET 14 OF 16

DP 548630  
 Original Scale: 1:100

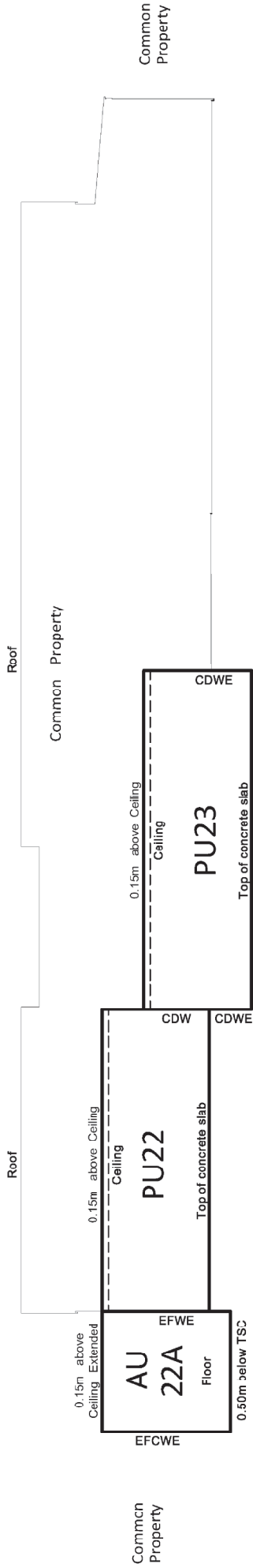
Job No:  
 19-194

SUBJECT TO PART IVA CONSERVATION ACT 1987

CROSS SECTION R - R'

R

R'



Common Property

- CDW = Centre of Dividing Wall
- CDWE = Centre of Dividing Wall and Extension
- EFCWE = External Face of Concrete Wall and Extension
- EFW = External Face of Wall
- EFWE = External Face of Wall and Extension
- TCS = Top of Concrete Slab
- TCSE = Top of Concrete Slab and Extension



Surveying Consultants

TL Survey Services Limited

UNITS ON LOT 1 DP 529818 & Pt. Lot 2 DP 6575

CROSS SECTION M - M' SHEET 15 OF 16

DP 548630

Original Scale: 1:100

Job No: 19-194

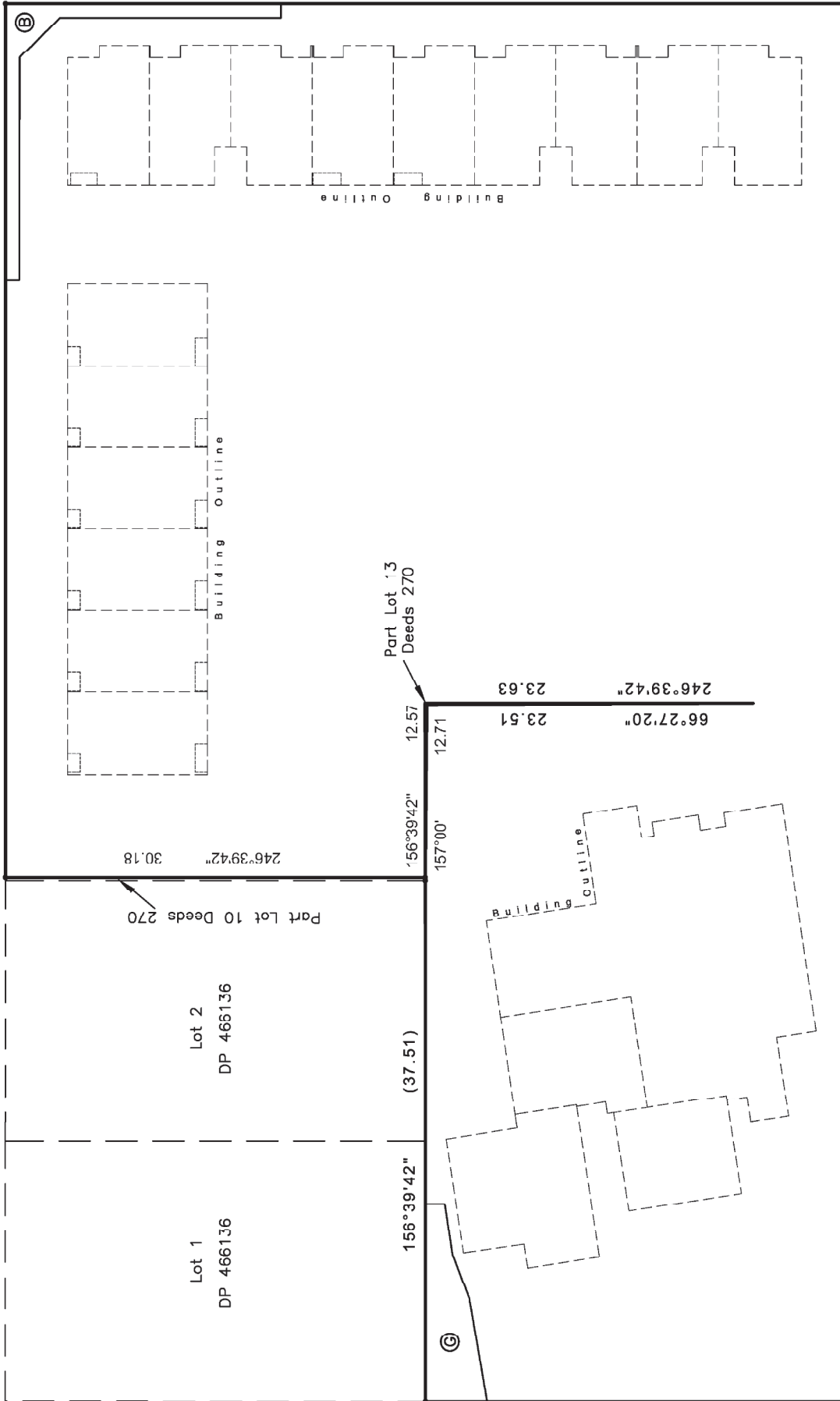
SUBJECT TO PART IVA CONSERVATION ACT 1987

Alva Street

156°39'42" (62.86)

246°39'42" (60.35)

High Street



Note: Refer to schedule for Easements and Covenants as shown above



Surveying Consultants

TL Survey Services Limited

UNITS ON LOT 1 DP 529818 & Pt. Lot 2 DP 6575

Easement & Covenant Sheet 16 of 16

DP 548630 Original Scale: 1:300

Job No: 19-147

336°39'42" 50.29

336°39'42" 50.33

Part Town Belt Town of Duendin

66°39'42" 0.07

Montpelier Street

66°39'42" (30.24)

156°39'42" (37.51)

Lot 2 DP 466136

Lot 1 DP 466136

Part Lot 10 Deeds 270

246°39'42" 30.18

Part Lot 13 Deeds 270

12.57

12.71

Building Outline

Building Outline

Building Outline

ⓑ

ⓒ



Units over Lot 1 DP 529818 and Part Lot 2 DP 6575

Schedule of Existing Easements			
Purpose	Shown	Servient Tenement (Burdened Land)	Document
Right to Drain Sewage, Right to Convey Water	G	Part Lot 2 DP 6575	EI 9227809.1

Schedule of Appurtenant Easements			
Purpose	Shown	Servient Tenement (Burdened Land)	Document
Right to Drain Stormwater	A & B on DP 466136	Lot 1 DP 466136	EI 9227809.1
Right to Convey Water, Right to Drain Sewage, Right to Drain Stormwater	B, C & DA on DP 466136		
	DB & E on DP 466136	Lot 2 DP 466136	

Schedule of Existing Land Covenants			
Purpose	Shown	Servient Tenement (Burdened Land)	Document
Land Covenant (Heritage)	B	Lot 1 DP 529818	C 9480250.1