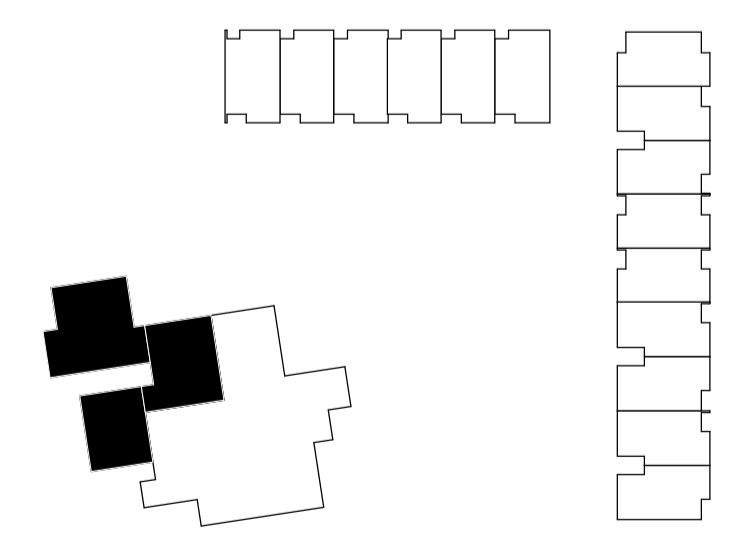


**ELECTRICAL LEGEND**

---	CIRCUIT WIRING	⊗ <sub>R</sub>	RECESSED LED LIGHT FITTING
⌋	POWER POINT DOUBLE	⊗ <sub>S</sub>	SURFACE LIGHT FITTING
⌋	POWER POINT SINGLE	⊗ <sub>W</sub>	WALL MOUNTED LIGHT FITTING
⌋	SWITCH	⊗ <sub>P</sub>	PENDANT LIGHT FITTING
DB	DISTRIBUTION BOARD	⊗ <sub>WE</sub>	WALL LIGHT FITTING EXTERNAL
ONT	OPTICAL NETWORK TERMINAL	—	FLOURESCENT LIGHT
ETP	EXTERNAL TERMINATION POINT	—	LED
EM2	EMERGENCY LIGHT FITTING	RETURN	CEILING RETURN VENT
CP	FIRE ALARM CALL POINT	SUPPLY	CEILING SUPPLY VENT
FA	FIRE CONTROL PANEL	RETURN	WALL RETURN VENT
SA	SMOKE ALARM	SUPPLY	WALL SUPPLY VENT
SND	FIRE ALARM SOUNDER - CEILING		

CONTINUED ON SHEET A1-12

ALL EXIT WAYS SHALL HAVE THE AMOUNT OF WATTAGE/m<sup>2</sup> EQUIVALENT TO INCANDESCENT OF 8 WATTS/m<sup>2</sup>



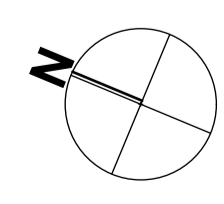
Copyright Reserved 2018 Architype Ltd. These drawings, plans, designs and specifications are subject to copyright. They must not be used, altered, reproduced or copied, in whole or in part, without the prior written consent of Architype Ltd.

All Drawings to be read in conjunction with keynote sheet A0-01 Do not scale drawings. Contractor must verify all dimensions on site prior to commencing any work or making any shop drawings which must be submitted for comment prior to manufacture

Where plans are used for construction without a direct contract for construction supervision by the designer then the designer shall not accept responsibility for any issue which may arise during or after the construction of this project due to deviation from these documents.

issue	amendment	date
01	FOR CONSTRUCTION	19/09/2018
02	DISTRIBUTION BOARDS ADDED	2/04/2019
03	M UNIT ELECTRICAL AMENDMENTS	22/04/2019
04	ELECTRICAL AMENDMENTS	29/08/2019

**architype**  
architects+designers



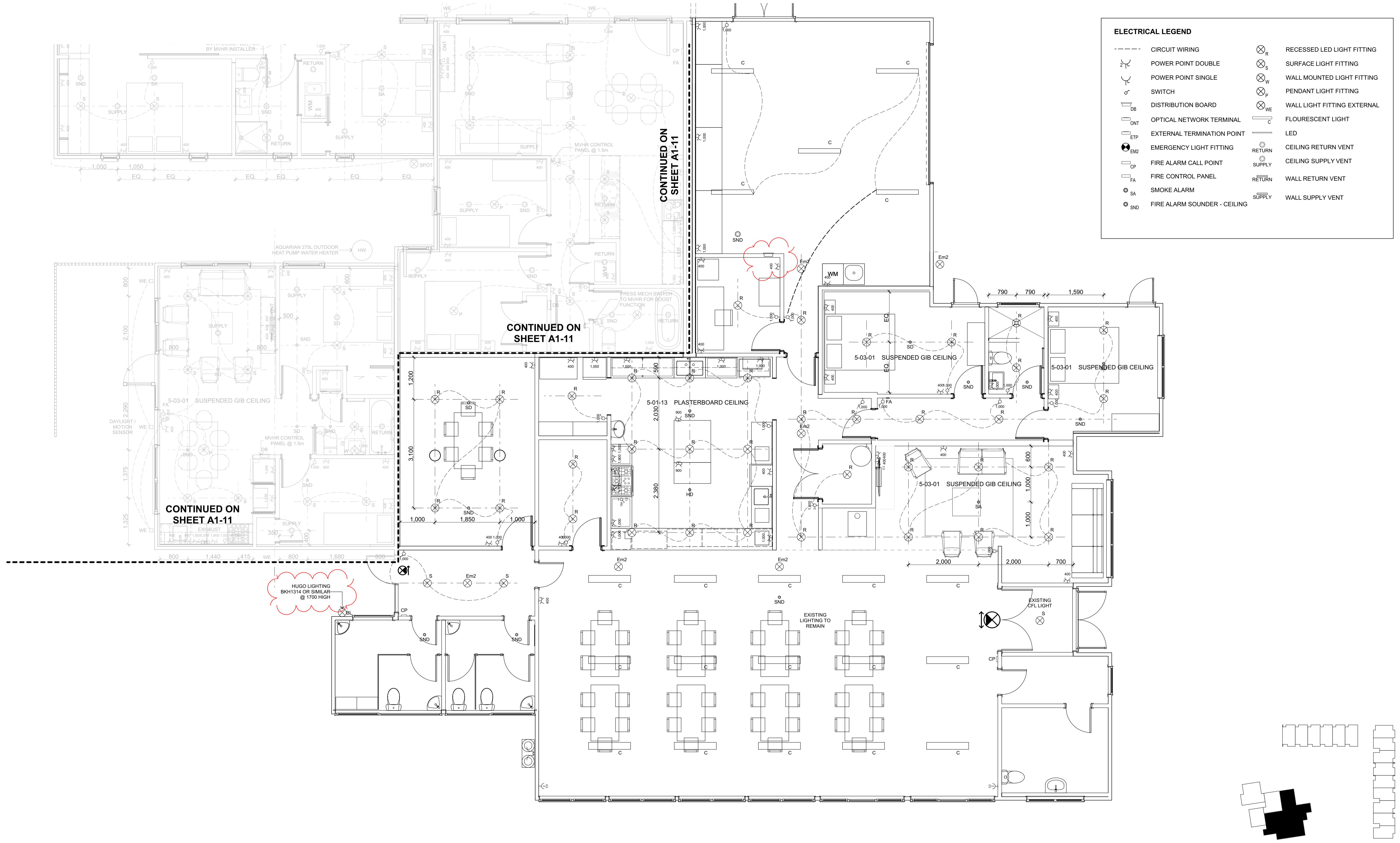
Architype Ltd.  
ASB House, Level 6  
248 Cumberland Street  
PO Box 5510, Dunedin 9058  
(t) 03 552 0621  
info@architype.co.nz

scale (A3) 1:100 (A1) 1:50  
30/08/2019

drawing title  
job no. drawing no. rev  
1402 / CH A1-11 04

Electrical Plan - Units

project  
High Street Cohousing-Common House  
7 Montpellier Street, City Rise



ELECTRICAL LEGEND			
---	CIRCUIT WIRING	⊗ <sub>R</sub>	RECESSED LED LIGHT FITTING
⊙	POWER POINT DOUBLE	⊗ <sub>S</sub>	SURFACE LIGHT FITTING
⊙	POWER POINT SINGLE	⊗ <sub>W</sub>	WALL MOUNTED LIGHT FITTING
⊙	SWITCH	⊗ <sub>P</sub>	PENDANT LIGHT FITTING
DB	DISTRIBUTION BOARD	⊗ <sub>WE</sub>	WALL LIGHT FITTING EXTERNAL
ONT	OPTICAL NETWORK TERMINAL	—	FLOURESCENT LIGHT
ETP	EXTERNAL TERMINATION POINT	—	LED
EM2	EMERGENCY LIGHT FITTING	⊙	CEILING RETURN VENT
CP	FIRE ALARM CALL POINT	⊙	CEILING SUPPLY VENT
FA	FIRE CONTROL PANEL	⊙	WALL RETURN VENT
SA	SMOKE ALARM	⊙	WALL SUPPLY VENT
SND	FIRE ALARM SOUNDER - CEILING		

Copyright Reserved 2018 Architype Ltd. These drawings, plans, designs and specifications are subject to copyright. They must not be used, altered, reproduced or copied, in whole or in part, without the prior written consent of Architype Ltd.

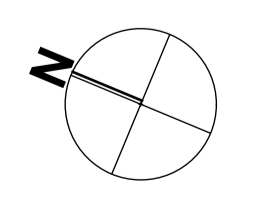
**All Drawings to be read in conjunction with keynote sheet A0-01 Do not scale drawings. Contractor must verify all dimensions on site prior to commencing any work or making any shop drawings which must be submitted for comment prior to manufacture**

Where plans are used for construction without a direct contract for construction supervision by the designer then the designer shall not accept responsibility for any issue which may arise during or after the construction of this project due to deviation from these documents.

issue	amendment	date
01	FOR CONSTRUCTION	19/09/2018
02	DISTRIBUTION BOARDS ADDED	2/04/2019
03	M UNIT ELECTRICAL AMENDMENTS	22/04/2019
04	ELECTRICAL AMENDMENTS, DB RELOCATED	29/08/2019

**architype**  
architects+designers

project  
High Street Cohousing-Common House  
7 Montpellier Street, City Rise



scale  
(A3) 1:100 (A1) 1:50  
30/08/2019

Architype Ltd.  
ASB House, Level 6  
248 Cumberland Street  
PO Box 5510, Dunedin 9058  
(t) 03 552 0621  
info@architype.co.nz

drawing title  
Electrical Plan - Common Area  
Ground Floor

job no. drawing no. rev  
1402 / CH A1-12 04