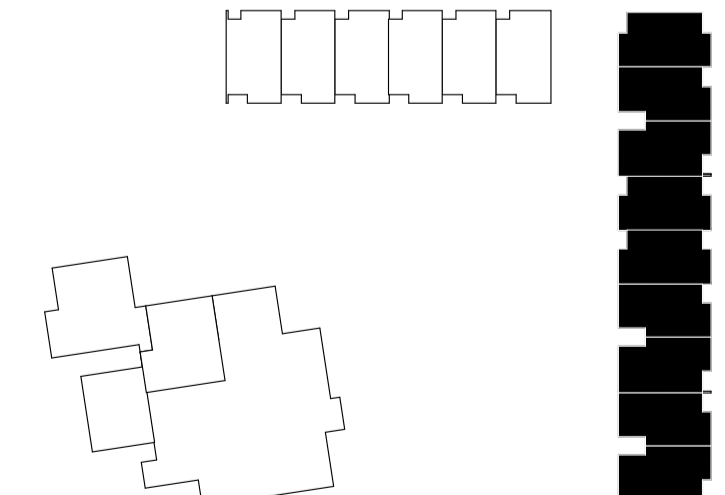
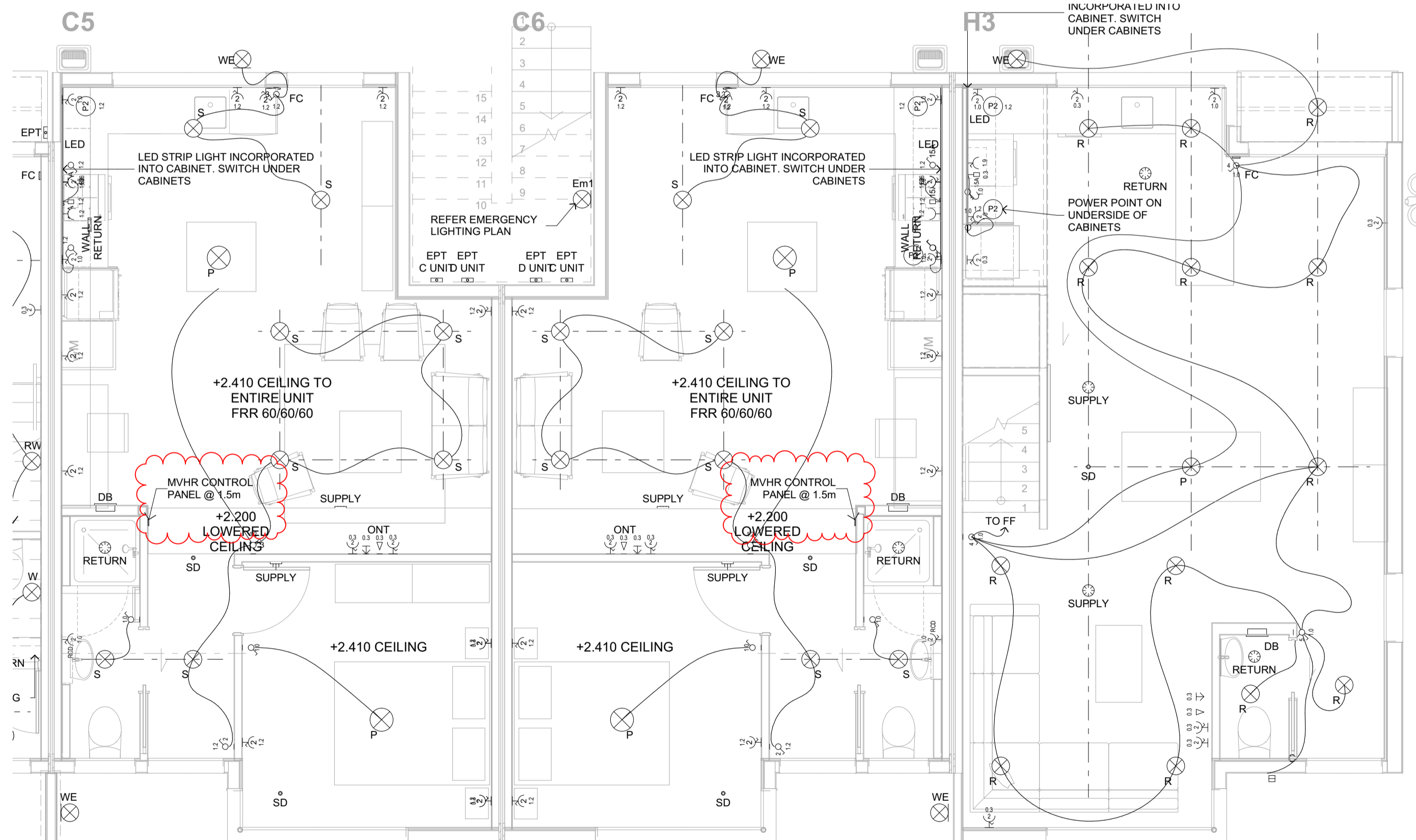


1 Ground Floor RCP / Electrical
1:50 @ A1

ELECTRICAL LEGEND	
	CIRCUIT WIRING
	POWER POINT DBL RCD
	POWER POINT DOUBLE
	POWER POINT SINGLE
	SWITCH
	TV AERIAL
	PHONE JACK
	OPTICAL NETWORK TERMINAL
	EXTERNAL TERMINATION POINT
	PENDANT LIGHT FITTING
	WALL LIGHT FITTING EXTERNAL
	PERMANENT CONNECTION
	RECESSED LED LIGHT FITTING
	SURFACE LIGHT FITTING
	WALL MOUNTED LIGHT FITTING
	RECESSED WALL LED - FORO
	LED
	SMOKE DETECTOR (REFER FIRE ALARM PLAN)
	EMERGENCY LIGHTING (REFER EMERGENCY LIGHTING PLAN)
	CEILING RETURN VENT
	CEILING SUPPLY VENT
	WALL RETURN VENT
	WALL SUPPLY VENT
	DISTRIBUTION BOARD



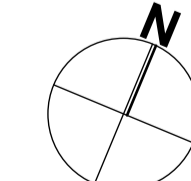
issue	amendment	date
01	FOR CONSTRUCTION	19/09/2018
02	DISTRIB. BOARDS MOVED	16/11/2018
03	ELECTRICAL AMENDMENTS	29/08/2019



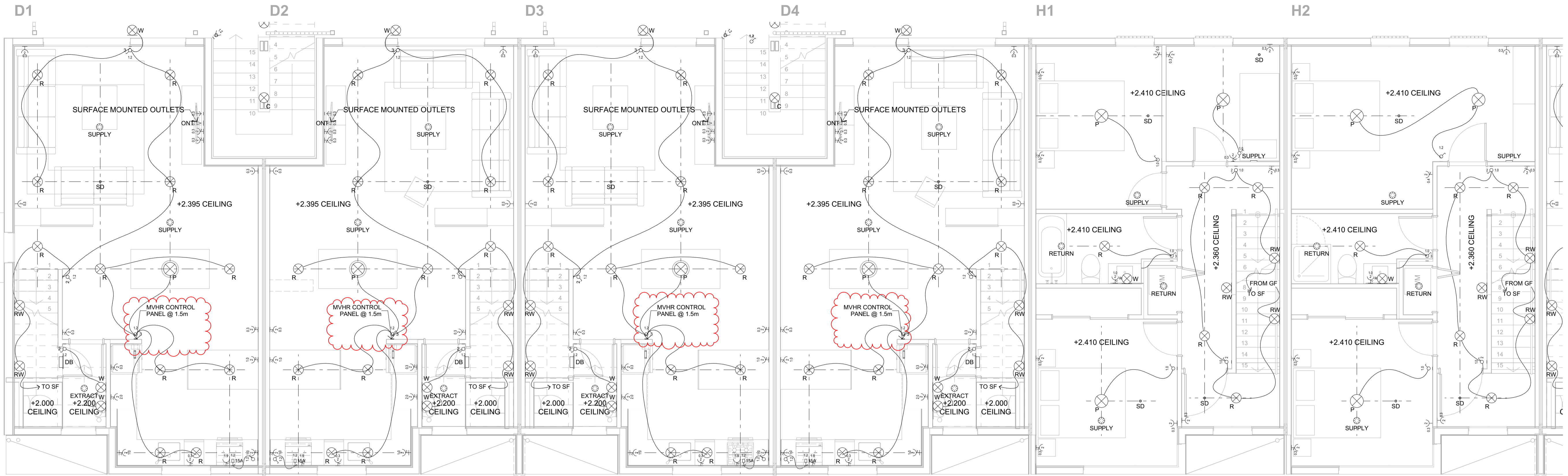
2 Ground Floor RCP / Electrical
1:50 @ A1

NOTE:
ELECTRICIAN TO ALLOW TO RUN DATA CABLE FROM EACH BATHROOM BACK TO MVR UNIT AND PROVIDE SWITCH FOR VENTILATION BOOST FUNCTION

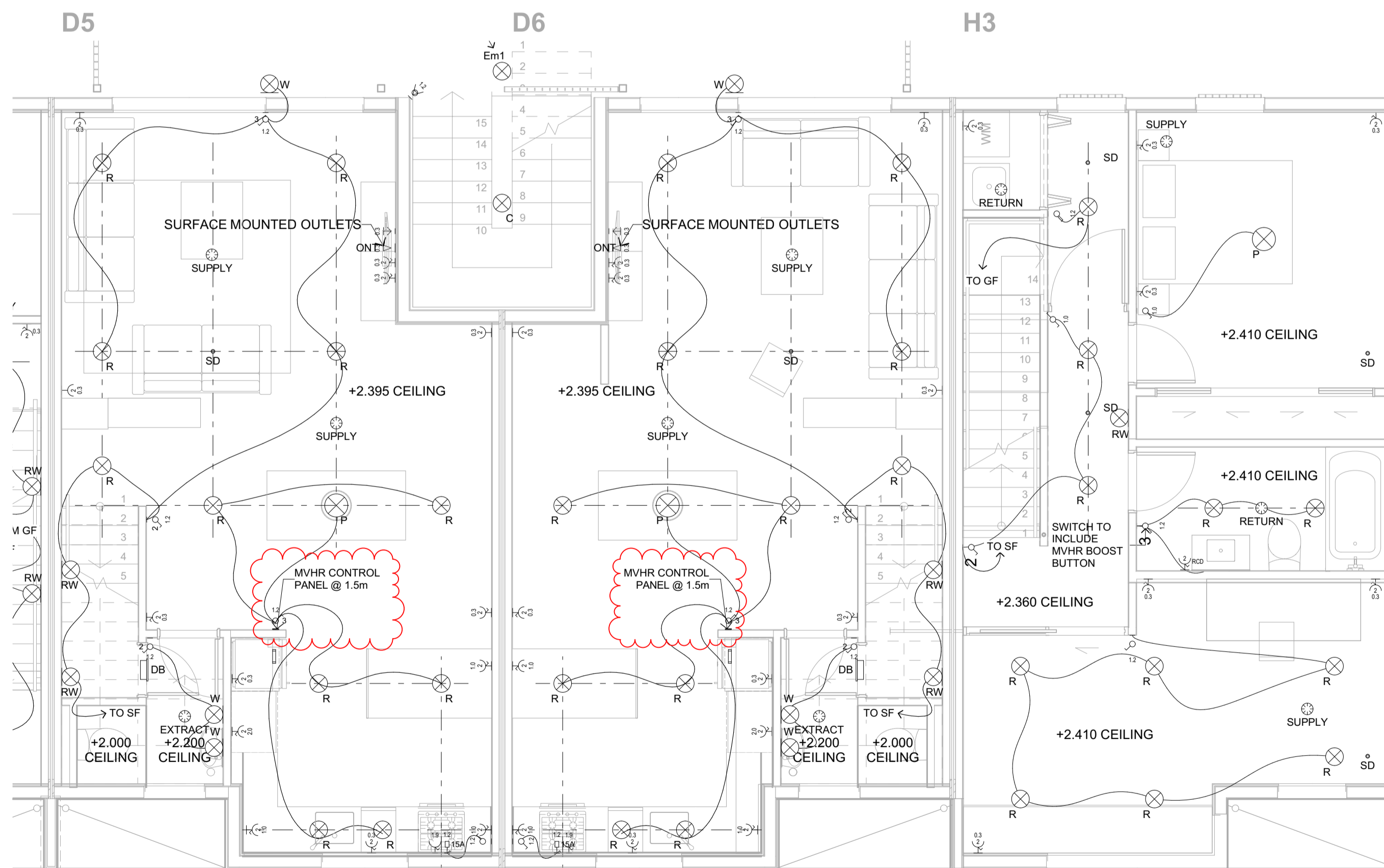
-The builder is responsible for the setting out of the works, the checking of all dimensions and levels on site, and the reporting of any discrepancies to the proprietor prior to commencement of work. Do not scale from drawings.
-All work is to comply with the acceptable solutions of the NZ Building Code and NZS 3604: 2011.
-Where plans are used for construction without a direct contract for construction supervision by the designer then the designer shall not accept responsibility for any issue which may arise during or after the construction of this project due to deviation from these documents.



scale (A1) 1:50 (A3) 1:100



1 First Floor RCP / Electrical
1:50 @ A1



2 First Floor RCP / Electrical
1:50 @ A1

ELECTRICAL LEGEND	
	CIRCUIT WIRING
	POWER POINT DBL RCD
	POWER POINT DOUBLE
	POWER POINT SINGLE
	SWITCH
	TV AERIAL
	PHONE JACK
	OPTICAL NETWORK TERMINAL
	EXTERNAL TERMINATION POINT
	PENDANT LIGHT FITTING
	WALL LIGHT FITTING EXTERNAL
	PERMANENT CONNECTION
	RECESSED LED LIGHT FITTING
	SURFACE LIGHT FITTING
	WALL MOUNTED LIGHT FITTING
	RECESSED WALL LED - FORO
	LED
	SMOKE DETECTOR (REFER FIRE ALARM PLAN)
	EMERGENCY LIGHTING (REFER EMERGENCY LIGHTING PLAN)
	CEILING RETURN VENT
	CEILING SUPPLY VENT
	WALL RETURN VENT
	WALL SUPPLY VENT
	DISTRIBUTION BOARD

issue	amendment	date
01	FOR CONSTRUCTION	19/09/2018
02	DISTRIB. BOARDS MOVED	16/11/2018
03	ELECTRICAL AMENDMENTS	29/08/2019

STAIR LIGHTING NOTE:
ELECTRICIAN TO ALLOW STAIR LED LIGHT FITTINGS EQUIVALENT TO 150 WATTS INCANDESCENT

NOTE:
ELECTRICIAN TO ALLOW TO RUN DATA CABLE FROM EACH BATHROOM BACK TO MVHR UNIT AND PROVIDE SWITCH FOR VENTILATION BOOST FUNCTION

FIRE SAFETY FEATURES BY FIRE SAFETY DESIGNER

-The builder is responsible for the setting out of the works, the checking of all dimensions and levels on site, and the reporting of any discrepancies to the proprietor prior to commencement of work. Do not scale from drawings.
-All work is to comply with the acceptable solutions of the NZ Building Code and NZS 3604: 2011.
-Where plans are used for construction without a direct contract for construction supervision by the designer then the designer shall not accept responsibility for any issue which may arise during or after the construction of this project due to deviation from these documents.

scale (A1) 1:50 (A3) 1:100

PROJECT High Street Cohousing - High St Homes

CLIENT Urban Cohousing Otepoti Ltd.

ADDRESS 7 Montpelier Street, Dunedin

DWG First RCP / Electrical Plan

DRAWN TR / SP PROJECT # 1402/H

CHKD TR / BB DWG #

DWG DATE 29/08/2019 A1-20

PLOT DATE REVISION 03