



Title Plan - LT 548630

Survey Number LT 548630
Surveyor Reference 19147 High St Cohousing
Surveyor Lena Kui Hayes
Survey Firm TL Survey Services Ltd
Surveyor Declaration I Lena Kui Hayes, being a licensed cadastral surveyor, certify that:
(a) this dataset provided by me and its related survey are accurate, correct and in accordance with the Cadastral Survey Act 2002 and the Rules for Cadastral Survey 2010, and
(b) the survey was undertaken by me or under my personal direction.
Declared on 26 Jan 2021 10:49 AM

Survey Details

Dataset Description Units over Lot 1 DP 529818 and Part Lot 2 DP 6575
Status Approved as to Survey
Land District Otago **Survey Class** Class A
Submitted Date 26/01/2021 **Survey Approval Date** 28/01/2021
Deposit Date

Territorial Authorities

Dunedin City

Comprised In

RT 962004

Created Parcels

Parcels	Parcel Intent	Area	RT Reference
Accessory Unit 24A Deposited Plan 548630	Accessory Unit		966681
Principal Unit 1 Deposited Plan 548630	Principal Unit		966658
Principal Unit 2 Deposited Plan 548630	Principal Unit		966659
Principal Unit 3 Deposited Plan 548630	Principal Unit		966660
Principal Unit 4 Deposited Plan 548630	Principal Unit		966661
Principal Unit 5 Deposited Plan 548630	Principal Unit		966662
Principal Unit 6 Deposited Plan 548630	Principal Unit		966663
Principal Unit 7 Deposited Plan 548630	Principal Unit		966664
Principal Unit 8 Deposited Plan 548630	Principal Unit		966665
Principal Unit 9 Deposited Plan 548630	Principal Unit		966666
Principal Unit 10 Deposited Plan 548630	Principal Unit		966667
Principal Unit 11 Deposited Plan 548630	Principal Unit		966668
Principal Unit 12 Deposited Plan 548630	Principal Unit		966669
Principal Unit 13 Deposited Plan 548630	Principal Unit		966670
Principal Unit 14 Deposited Plan 548630	Principal Unit		966671
Principal Unit 15 Deposited Plan 548630	Principal Unit		966672
Principal Unit 16 Deposited Plan 548630	Principal Unit		966673
Principal Unit 17 Deposited Plan 548630	Principal Unit		966674
Principal Unit 18 Deposited Plan 548630	Principal Unit		966675
Principal Unit 19 Deposited Plan 548630	Principal Unit		966676

Title Plan - LT 548630

Created Parcels

Parcels	Parcel Intent	Area	RT Reference
Principal Unit 20 Deposited Plan 548630	Principal Unit		966677
Principal Unit 21 Deposited Plan 548630	Principal Unit		966678
Principal Unit 22 Deposited Plan 548630	Principal Unit		966679
Principal Unit 23 Deposited Plan 548630	Principal Unit		966680
Principal Unit 24 Deposited Plan 548630	Principal Unit		966681
Accessory Unit 1A Deposited Plan 548630	Accessory Unit		966658
Accessory Unit 1B Deposited Plan 548630	Accessory Unit		966658
Accessory Unit 1C Deposited Plan 548630	Accessory Unit		Multiple
Accessory Unit 2A Deposited Plan 548630	Accessory Unit		966659
Accessory Unit 2B Deposited Plan 548630	Accessory Unit		966659
Accessory Unit 2C Deposited Plan 548630	Accessory Unit		Multiple
Accessory Unit 3A Deposited Plan 548630	Accessory Unit		966660
Accessory Unit 3B Deposited Plan 548630	Accessory Unit		966660
Accessory Unit 4A Deposited Plan 548630	Accessory Unit		966661
Accessory Unit 4B Deposited Plan 548630	Accessory Unit		966661
Accessory Unit 5A Deposited Plan 548630	Accessory Unit		966662
Accessory Unit 5B Deposited Plan 548630	Accessory Unit		966662
Accessory Unit 6A Deposited Plan 548630	Accessory Unit		966663
Accessory Unit 6B Deposited Plan 548630	Accessory Unit		966663
Accessory Unit 7A Deposited Plan 548630	Accessory Unit		966664
Accessory Unit 7B Deposited Plan 548630	Accessory Unit		966664
Accessory Unit 8A Deposited Plan 548630	Accessory Unit		966665
Accessory Unit 8B Deposited Plan 548630	Accessory Unit		966665
Accessory Unit 9A Deposited Plan 548630	Accessory Unit		966666
Accessory Unit 9B Deposited Plan 548630	Accessory Unit		966666
Accessory Unit 10A Deposited Plan 548630	Accessory Unit		966667
Accessory Unit 10B Deposited Plan 548630	Accessory Unit		Multiple
Accessory Unit 11A Deposited Plan 548630	Accessory Unit		966668
Accessory Unit 12A Deposited Plan 548630	Accessory Unit		966669
Accessory Unit 12B Deposited Plan 548630	Accessory Unit		Multiple
Accessory Unit 13A Deposited Plan 548630	Accessory Unit		966670
Accessory Unit 14A Deposited Plan 548630	Accessory Unit		966671
Accessory Unit 14B Deposited Plan 548630	Accessory Unit		Multiple
Accessory Unit 15A Deposited Plan 548630	Accessory Unit		966672
Accessory Unit 16A Deposited Plan 548630	Accessory Unit		966673
Accessory Unit 16B Deposited Plan 548630	Accessory Unit		966673
Accessory Unit 17A Deposited Plan 548630	Accessory Unit		966674
Accessory Unit 17B Deposited Plan 548630	Accessory Unit		966674
Accessory Unit 18A Deposited Plan 548630	Accessory Unit		966675
Accessory Unit 18B Deposited Plan 548630	Accessory Unit		966675
Accessory Unit 19A Deposited Plan 548630	Accessory Unit		966676
Accessory Unit 19B Deposited Plan 548630	Accessory Unit		966676
Accessory Unit 20A Deposited Plan 548630	Accessory Unit		966677
Accessory Unit 20B Deposited Plan 548630	Accessory Unit		966677



Title Plan - LT 548630

Created Parcels

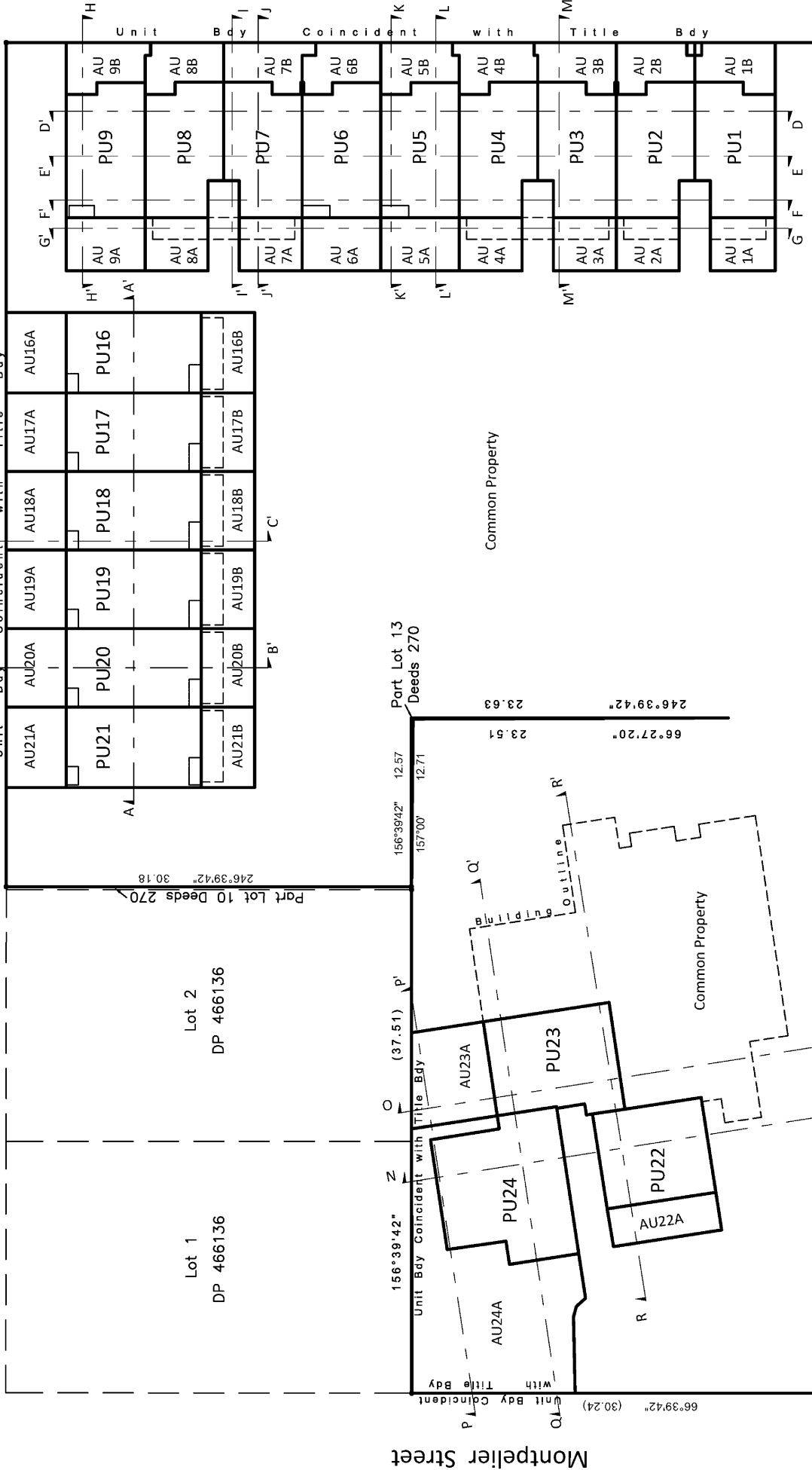
Parcels	Parcel Intent	Area	RT Reference
Accessory Unit 21A Deposited Plan 548630	Accessory Unit		966678
Accessory Unit 21B Deposited Plan 548630	Accessory Unit		966678
Accessory Unit 22A Deposited Plan 548630	Accessory Unit		966679
Accessory Unit 23A Deposited Plan 548630	Accessory Unit		966680
Total Area		<hr/> 0.0000 Ha	

SUBJECT TO PART IVA CONSERVATION ACT 1987

Alva Street

High Street

Montpelier Street



Note: Easements and Covenants not shown for clarity. Refer to Sheet 16.

336°39'42" 50.29

66°27'20" 23.51

66°39'42" 0.07

336°39'42" 50.33

Part Town Belt
Town of Duendin



Surveying Consultants
TL Survey Services Limited

UNITS ON LOT 1 DP 529818
& Pt. Lot 2 DP 6575

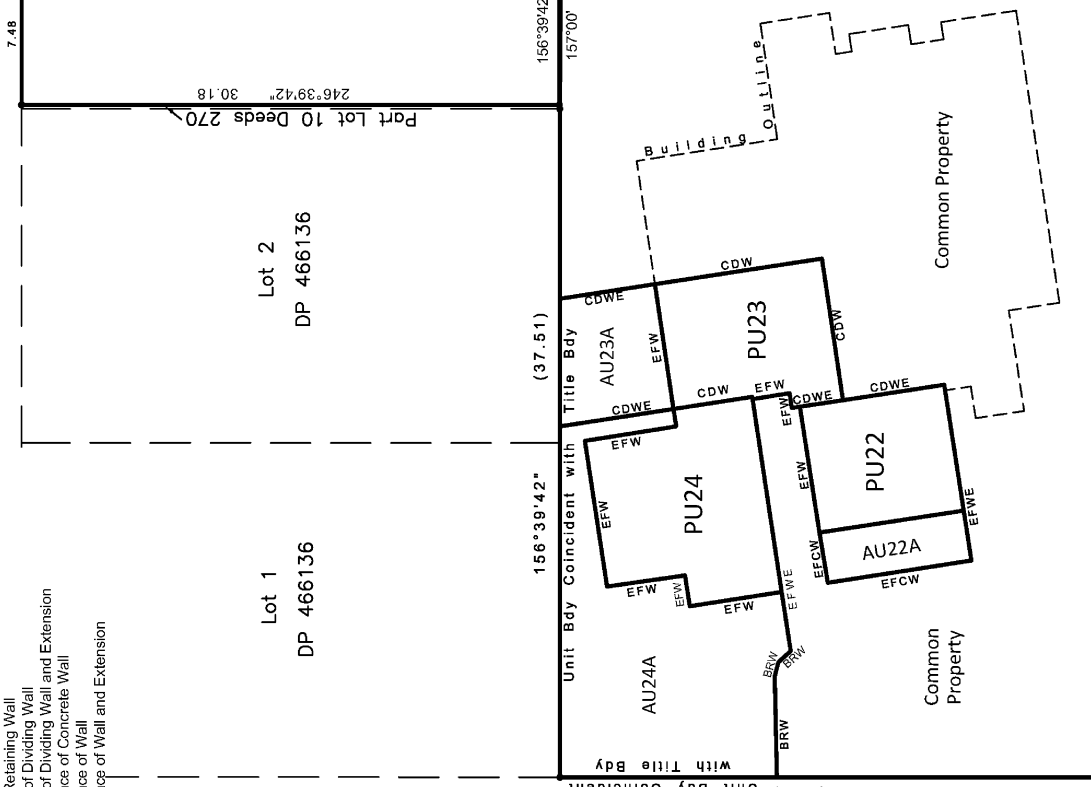
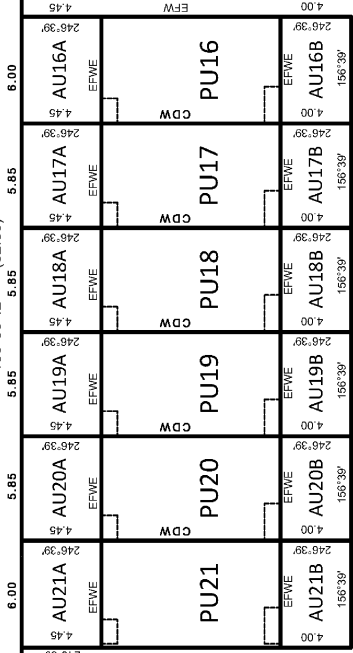
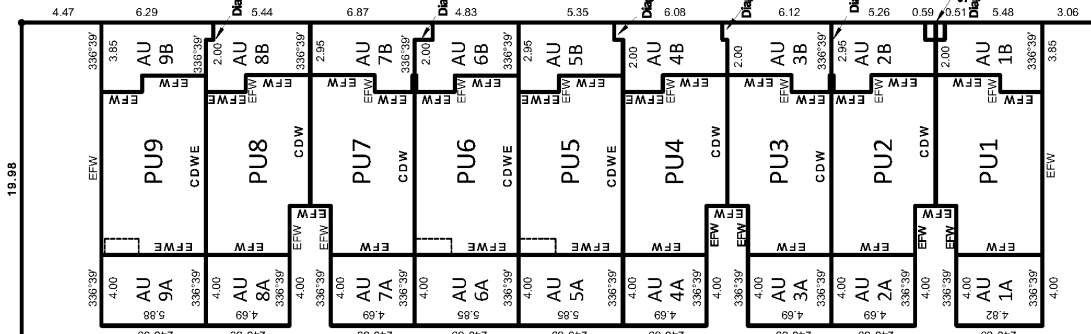
OVERALL PLAN
Sheet 1 of 16

DP 548630
Scale: 1:300 @ A3

Job No:
19-147

High Street

Unit Bdy Coincident with Title Bdy



Alva Street

Montpellier Street

336°39'42" 50.29

336°39'42" 50.33

66°39'42" 0.07

Part Town Belt
Town of Duendin

Note: Easements and Covenants not shown for clarity. Refer to Sheet 16.

SUBJECT TO PART IVA CONSERVATION ACT 1987

NOTE:
 Unless shown, PU boundaries are the exterior face of walls of buildings
 BRW = Bottom of Retaining Wall
 CDW = Centreline of Dividing Wall
 CDWE = Centreline of Dividing Wall and Extension
 EFCW = External Face of Concrete Wall
 EFW = External Face of Wall
 EFCWE = External Face of Wall and Extension

Lot 1
 DP 466136

Lot 2
 DP 466136

Part Lot 13
Deeds 270

Part Lot 10 Deeds 270



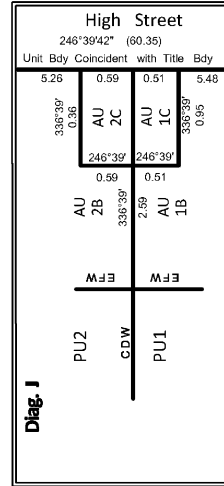
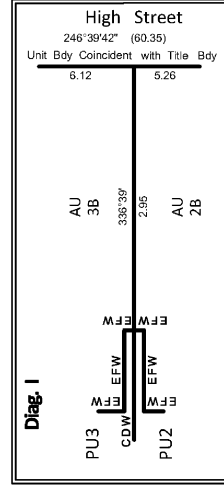
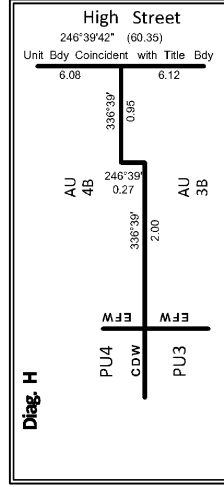
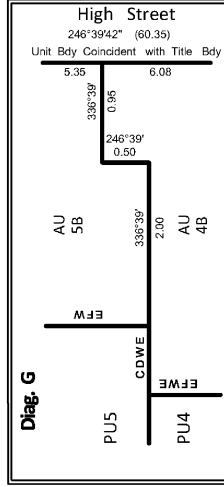
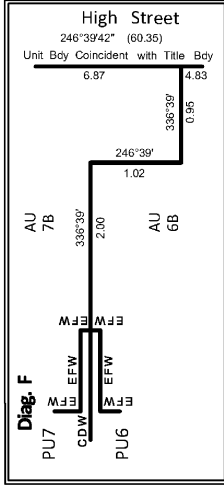
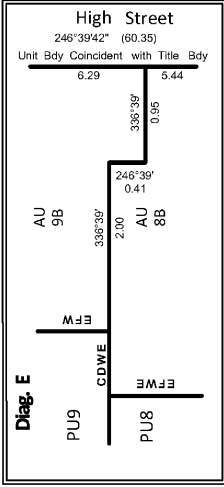
Surveying Consultants
TL Survey Services Limited

UNITS ON LOT 1 DP 529818
& Pt. Lot 2 DP 6575

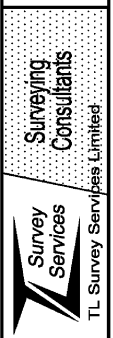
GROUND FLOOR PLAN
Sheet 2 of 16

DP 548630
Scale: 1:300 @ A3

Job No:
19-147



NOTE:
 Unless shown, PU boundaries are the exterior face of walls of buildings
 CDW = Centreline of Dividing Wall
 CDWE = Centreline of Dividing Wall and Extension
 EFCW = External Face of Concrete Wall
 EFW = External Face of Wall
 EFFE = External Face of Wall and Extension



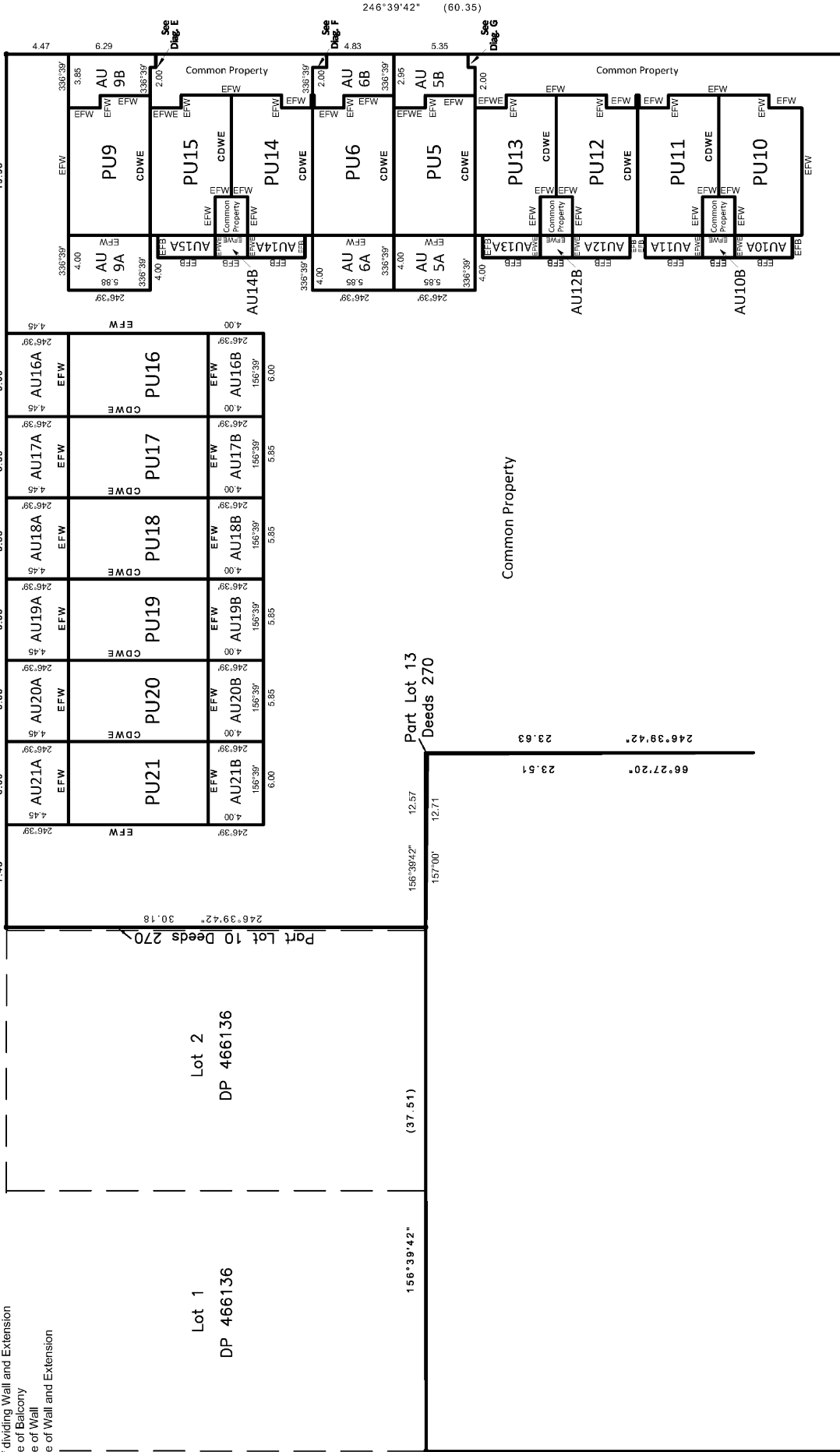
SUBJECT TO PART IVA CONSERVATION ACT 1987

NOTE:
 Unless shown, PU boundaries are the exterior face of walls of buildings
 CDW = Centraline of dividing Wall
 CDWE = Centraline of dividing Wall and Extension
 EFB = External Face of Balcony
 EFW = External Face of Wall
 EFWE = External Face of Wall and Extension

Alva Street

High Street

Montpelier Street



336°39'42" 50.33
 Part Town Belt
 Town of Duendin



Surveying
 Consultants
 TL Survey Services Limited

UNITS ON LOT 1 DP 529818
 & Pt. Lot 2 DP 6575

FIRST FLOOR PLAN
 Sheet 4 of 16

DP 548630
 Scale: 1:300 @ A3

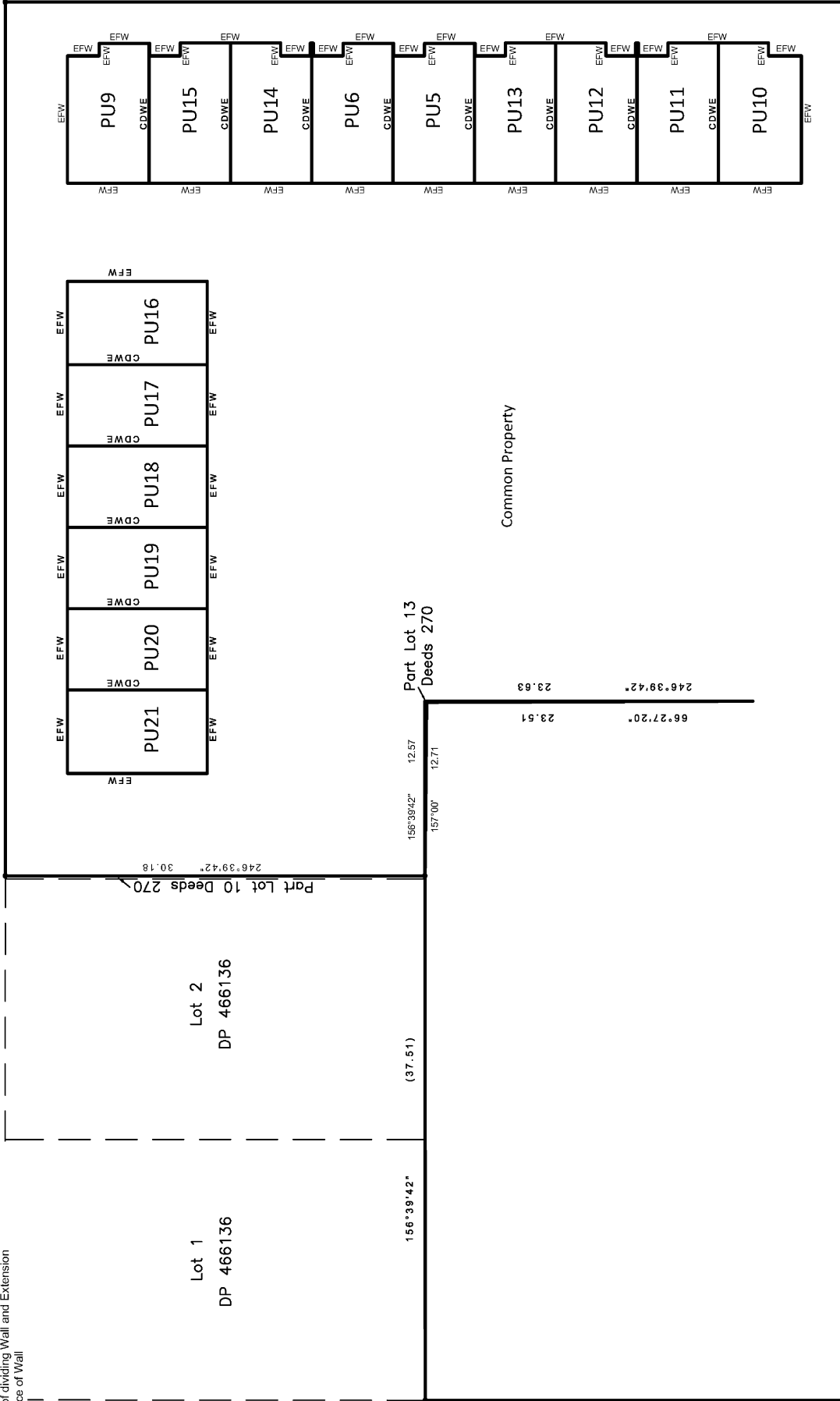
Job No:
 19-147

SUBJECT TO PART IVA CONSERVATION ACT 1987

NOTE:
Unless shown, PU boundaries are the exterior face of walls of buildings
CDW = Centreline of dividing Wall
CDWE = Centreline of dividing Wall and Extension
EFW = External Face of Wall

Alva Street

156°39'42" (62.86)



High Street

246°39'42" (60.35)

Montpelier Street

66°39'42" (30.24)

Part Lot 13
Deeds 270

156°39'42" (37.51)

Lot 2
DP 466136

Lot 1
DP 466136

Part Lot 10 Deeds 270
246°39'42" 30.18

336°39'42" 50.33

66°39'42" 0.07

336°39'42" 50.29

Part Town Belt
Town of Duendin

Common Property



Surveying
Consultants
TL Survey Services Limited

UNITS ON LOT 1 DP 529818
& Pt. Lot 2 DP 6575

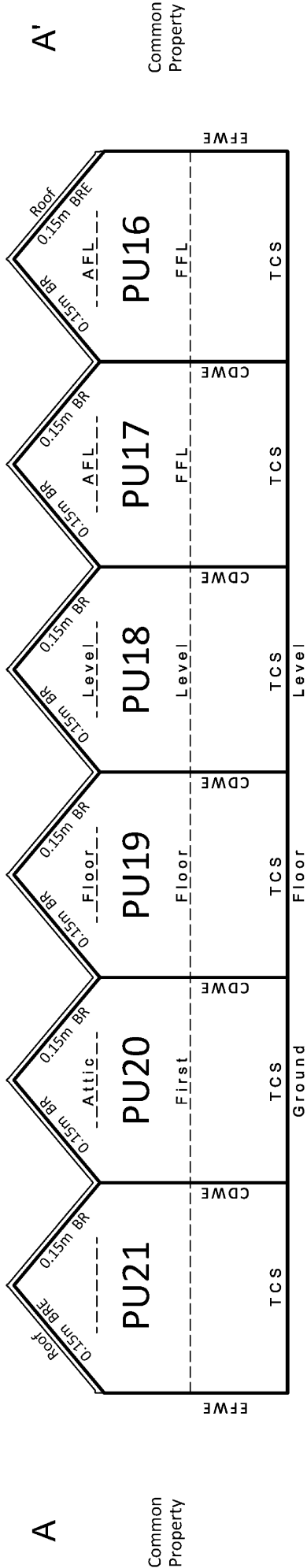
SECOND FLOOR PLAN
Sheet 5 of 16

DP 548630
Scale: 1:300 @ A3

Job No:
19-147

CROSS SECTION A - A'

Common Property



A

A'

Common Property

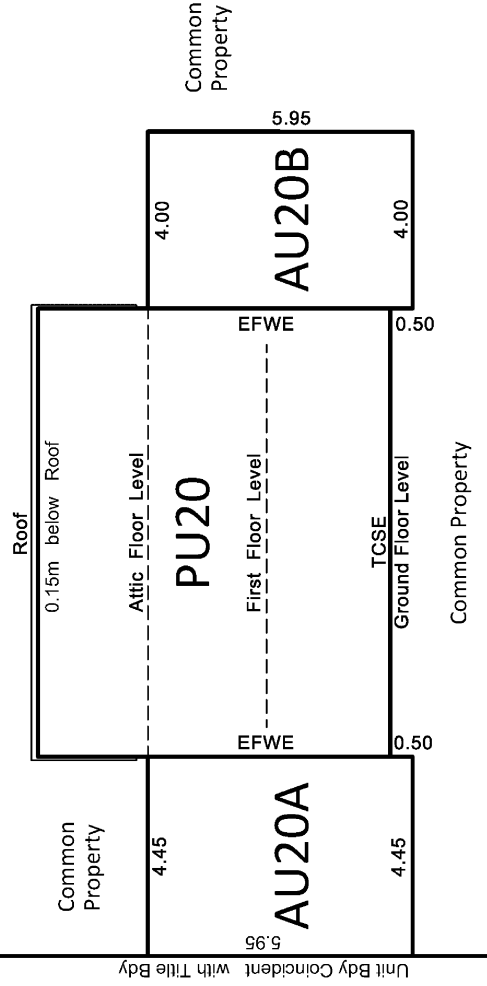
Common Property

CROSS SECTION B - B'

B'

B

Common Property



Alva Street

Common Property

- NOTE:
 Unless otherwise stated, PUs are defined by the external face of walls
 AFLE = Attic Floor Level and Extension
 BR = Below Roof (cladding)
 BRE = Below Roof (cladding) and Extension
 CDW = Centraline of Dividing Wall
 CDWF = Centraline of Dividing Wall and Extension
 EFW = External Face of Wall
 EFWE = External Face of Wall and Extension
 TCS = Top of Concrete Slab
 TCSE = Top of Concrete Slab and Extension

This cross section applies to PU16 - PU21 also



Surveying Consultants

UNITS ON LOT 1 DP 529818
 & Pt. Lot 2 DP 6575

CROSS SECTIONS
 A - A' & B - B'
 SHEET 6 OF 16

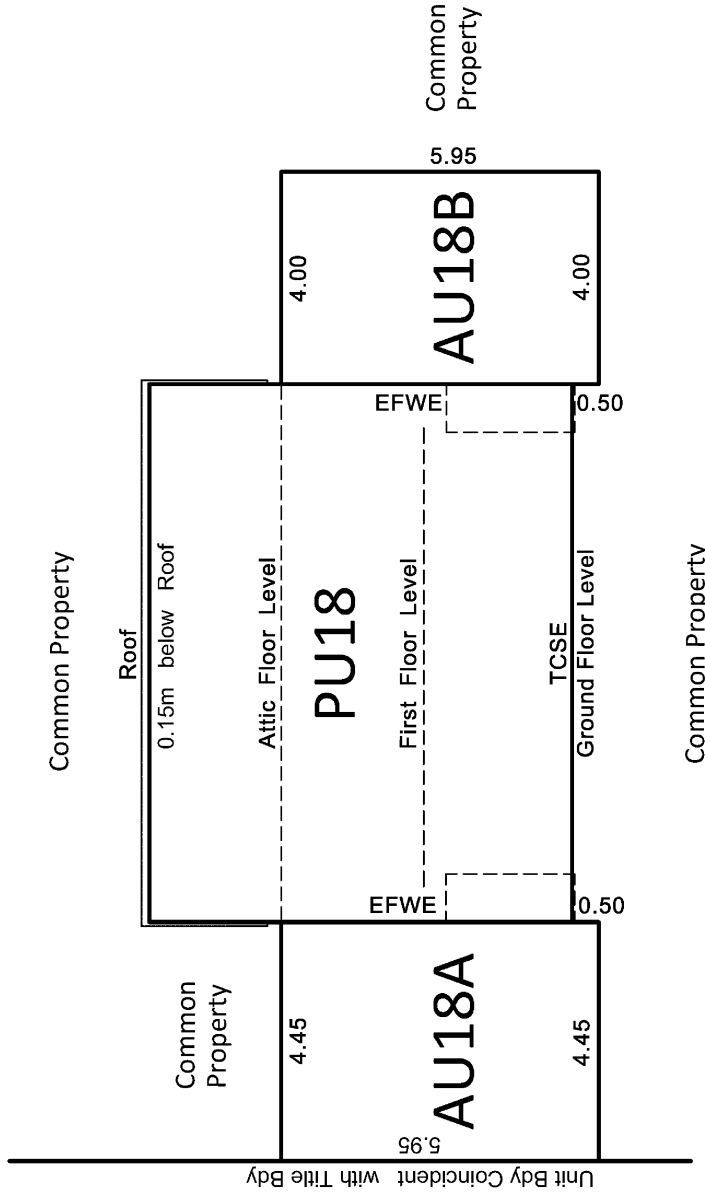
DP 548630
 Scale: 1:100 @ A3

Job No:
 19-194

CROSS SECTION C - C'

C

C'



Alva Street

NOTE:
 Unless otherwise stated, PUs are defined by the external face of walls
 AFLE = Attic Floor Level and Extension
 BR = Below Roof (cladding)
 BRE = Below Roof (cladding) and Extension
 CDW = Centreline of Dividing Wall
 CDWF = Centreline of Dividing Wall and Extension
 EFW = External Face of Wall
 EFWE = External Face of Wall and Extension
 TCS = Top of Concrete Slab
 TCSE = Top of Concrete Slab and Extension

This cross section applies to PU16 - PU21 also



Surveying
 Consultants

TL Survey Services Limited

UNITS ON LOT 1 DP 529818
 & Pt. Lot 2 DP 6575

CROSS SECTION
 C - C'
 SHEET 7 OF 16

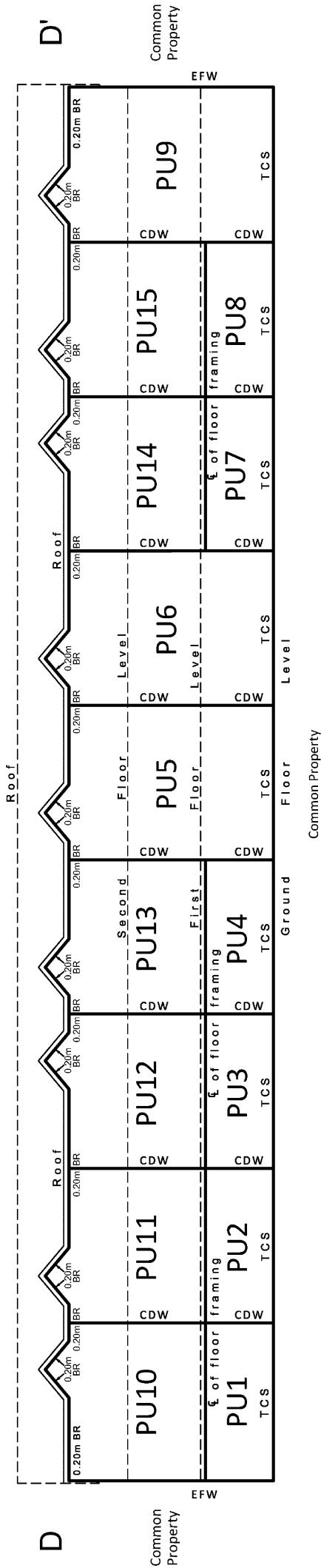
DP 548630
 Scale: 1:100 @ A3

Job No:
 19-194

SUBJECT TO PART IVA CONSERVATION ACT 1987

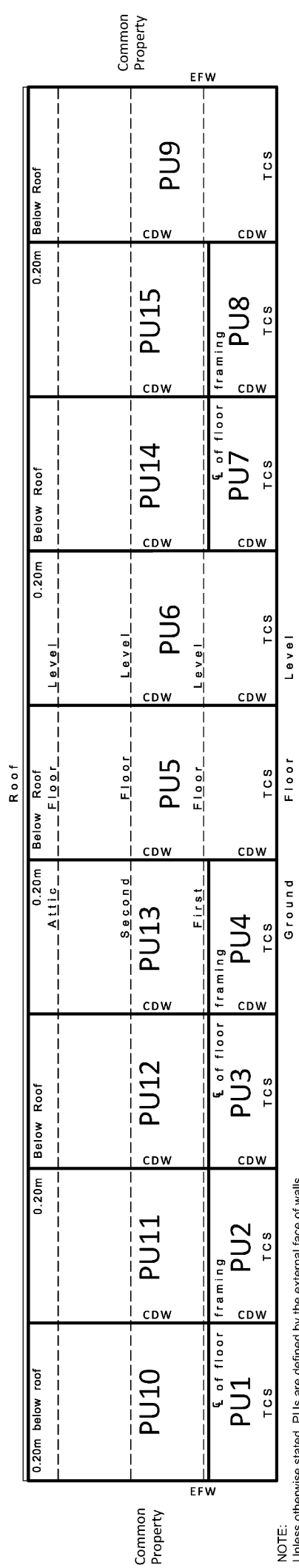
CROSS SECTION D - D'

Common Property



CROSS SECTION E - E'

Common Property



NOTE:
 Unless otherwise stated, PUs are defined by the external face of walls
 BR = Below Roof (cladding)
 CDW = Centreline of Dividing Wall
 EFW = External Face of Wall
 EFW/E = External Face of Wall and Extension
 TCS = Top of Concrete Slab
 TCS/E = Top of Concrete Slab and Extension



Surveying
 Consultants

UNITS ON LOT 1 DP 529818
 & Pt. Lot 2 DP 6575

CROSS SECTIONS
 D - D' & E - E'
 SHEET 8 OF 16

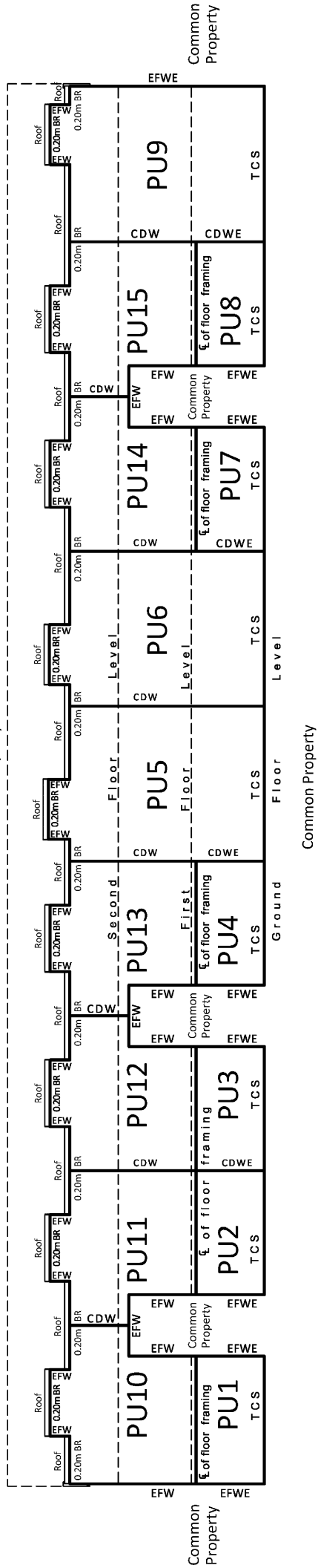
DP 548630
 Scale: 1:150 @ A3

Job No:
 19-194

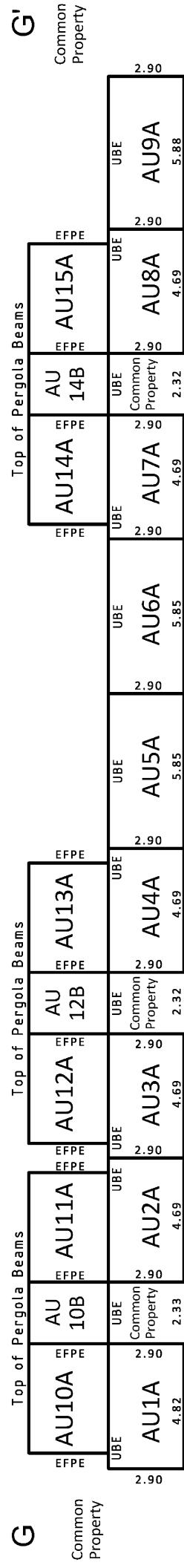
CROSS SECTION F - F'

SUBJECT TO PART IVA CONSERVATION ACT 1987

F' Common Property F



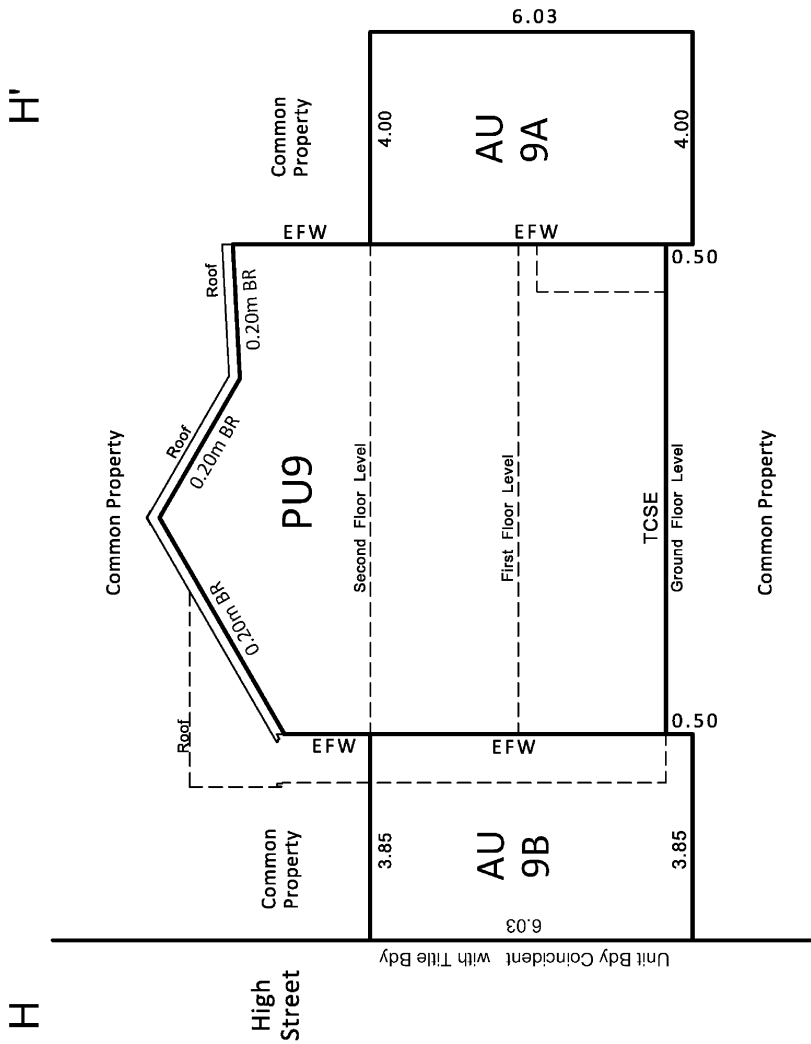
CROSS SECTION G - G'



NOTE:
 Unless otherwise stated, PUs are defined by the external face of walls
 BR = Below Roof (cladding)
 CDW = Centreline of Dividing Wall
 CDWE = Centreline of Dividing Wall and Extension
 CPFE = Centreline of Patio Fence and Extension
 EFPE = External Face of Post and Extension
 EFW = External Face of Wall
 EFWE = External Face of Wall and Extension
 TCS = Top of Concrete Slab
 UBE = Underside of Balcony and Extension

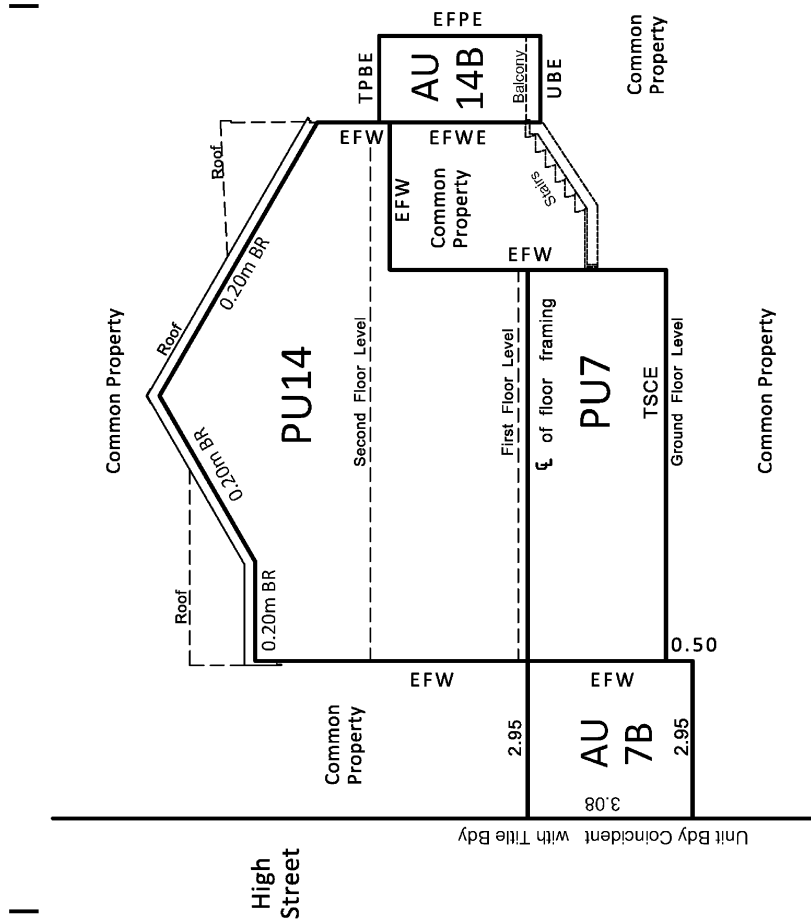
<p>Survey Services Consultants TL Survey Services Limited</p>	<p>UNITS ON LOT 1 DP 529818 & Pt. Lot 2 DP 6575</p>	<p>CROSS SECTIONS F - F' & G - G' SHEET 9 OF 16</p>	<p>DP 548630 Scale: 1:150 @ A3</p>	<p>Job No: 19-194</p>
	<p>Survey Services Consultants</p>			<p>Job No: 19-194</p>

CROSS SECTION H - H'



This cross section applies to PU5, PU6 & PU9

CROSS SECTION I - I'



This cross section applies to PU1 - PU4, PU7, PU8, PU10 - PU15

SUBJECT TO PART IVA CONSERVATION ACT 1987

NOTE:
 Unless otherwise stated, PUs are defined by the external face of walls
 BR = Below Roof (cladding)
 CDW = Centreline of Dividing Wall
 EFPE = External Face of Post and Extension
 EFW = External Face of Wall
 EFWE = External Face of Wall and Extension
 TCS = Top of Concrete Slab
 TCSE = Top of Concrete Slab and Extension
 TPBE = Top of Pergola Beams and Extension
 UBE = Underside of Beam and Extension



Surveying Consultants
 TL Survey Services Limited

UNITS ON LOT 1 DP 529818
 & Pt. Lot 2 DP 6575

CROSS SECTIONS
 H - H' & I - I'
 SHEET 10 OF 16

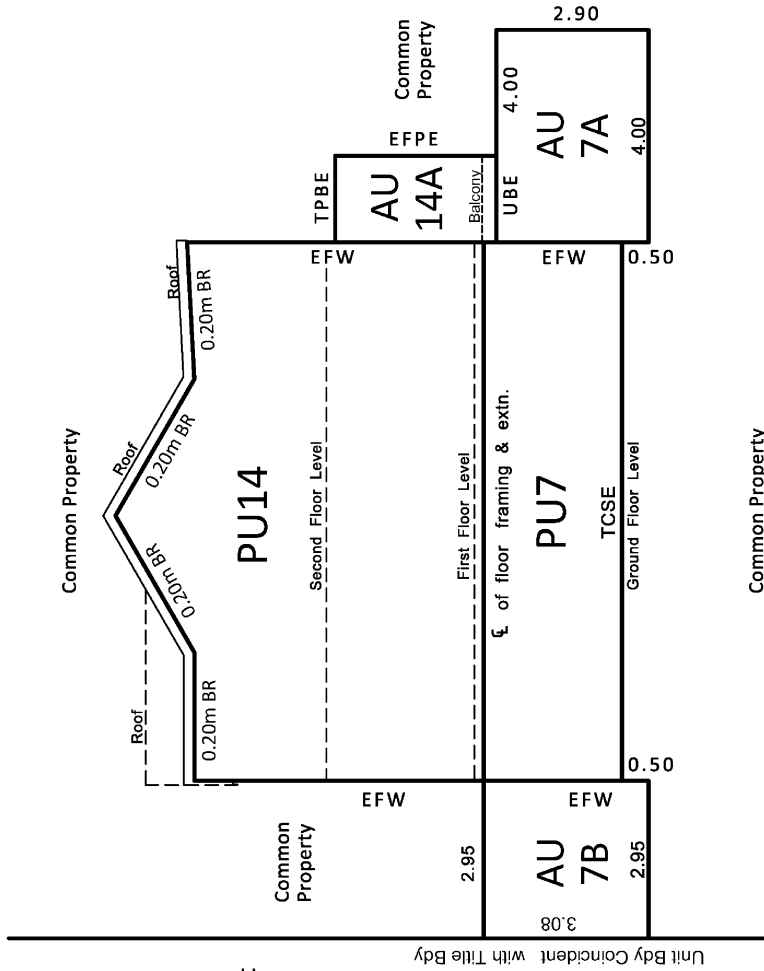
DP 548630
 Scale: 1:100 @ A3

Job No:
 19-194

CROSS SECTION J - J'

J'

K



Common Property

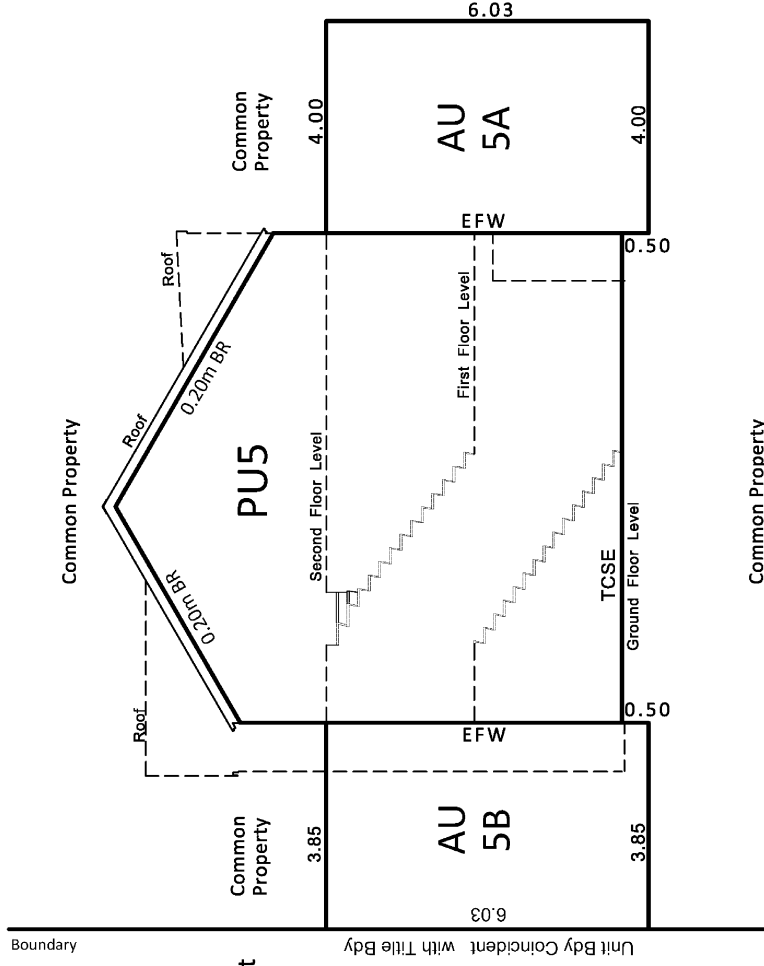
Common Property

This cross section applies to PU1 - PU4, PU7, PU8, PU10 - PU15

CROSS SECTION K - K'

K'

K



Common Property

Common Property

This cross section applies to PU5, PU6 & PU9

SUBJECT TO PART IVA CONSERVATION ACT 1987

- NOTE:
 Unless otherwise stated, PUs are defined by the external face of walls
 BR = Below Roof (cladding)
 CDW = Centreline of Dividing Wall
 EFPE = External Face of Post and Extension
 EFW = External Face of Wall
 EFW = External Face of Wall
 EFW = External Face of Wall and Extension
 TCS = Top of Concrete Slab
 TCSE = Top of Concrete Slab and Extension
 TPBE = Top of Pergola Beams and Extension
 UBE = Underside of Beam and Extension



Surveying Consultants

TL Survey Services Limited

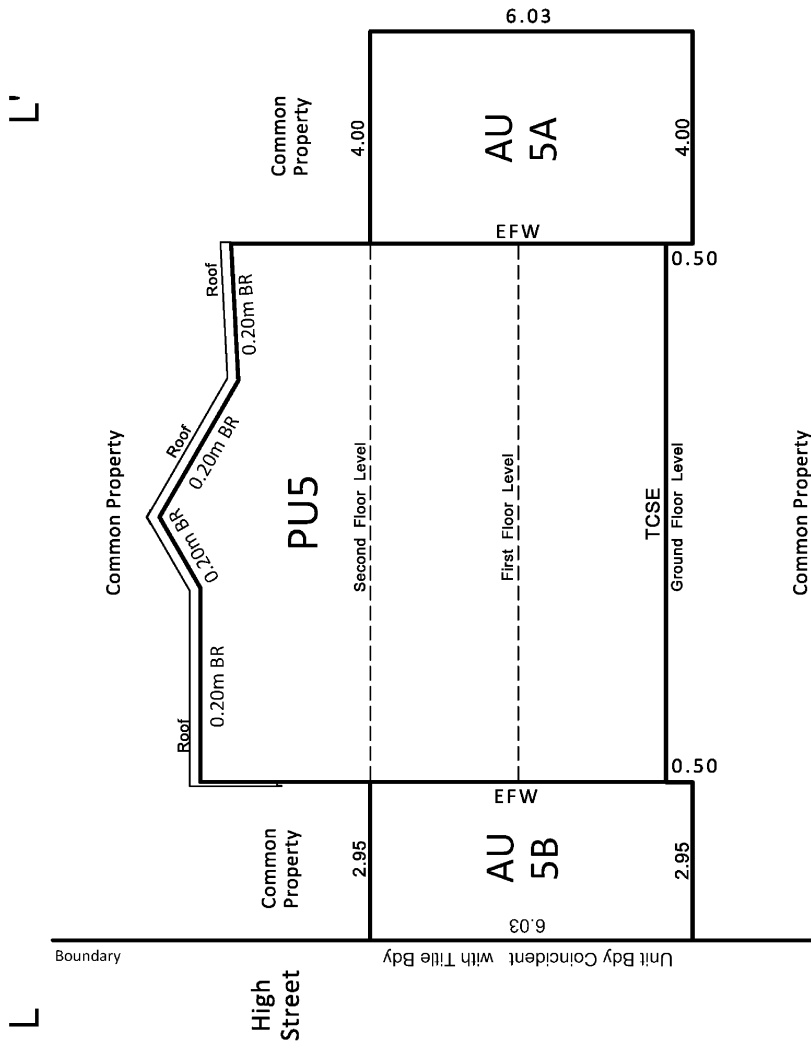
UNITS ON LOT 1 DP 529818 & Pt. Lot 2 DP 6575

CROSS SECTIONS J - J' & K - K' SHEET 11 OF 16

DP 548630 Scale: 1:100 @ A3

Job No: 19-194

CROSS SECTION L-L'

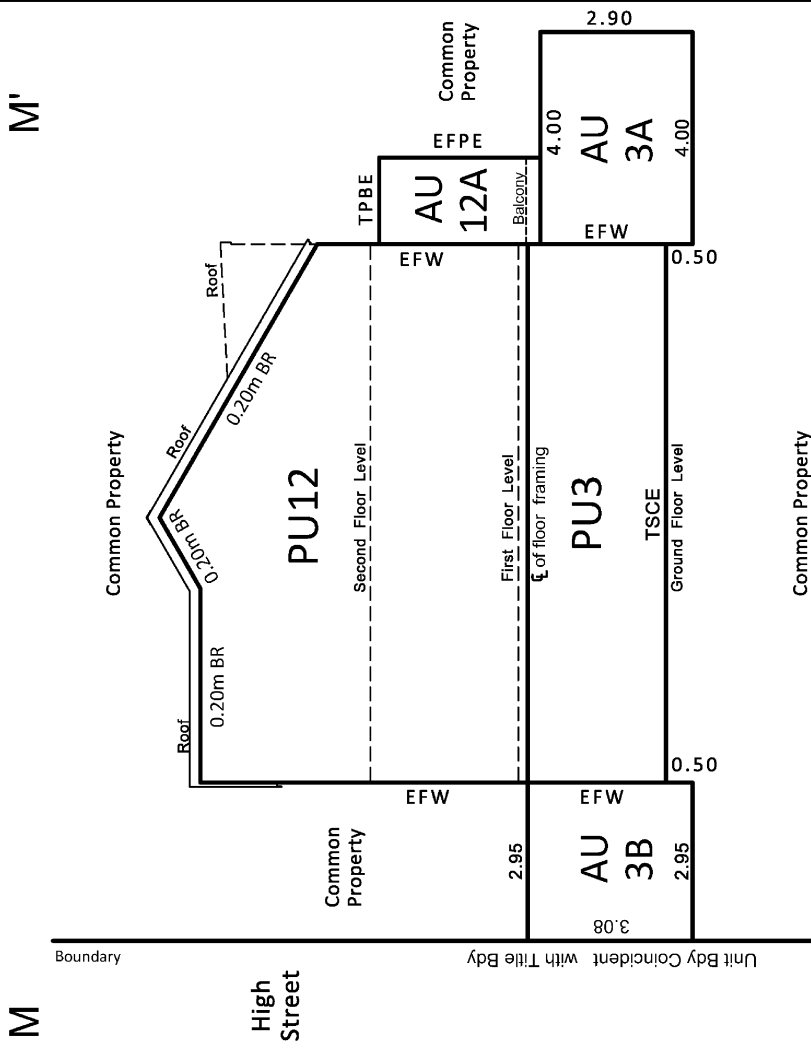


SUBJECT TO PART IVA CONSERVATION ACT 1987

- NOTE:
 Unless otherwise stated, PUs are defined by the external face of walls
 BR = Below Roof (cladding)
 CDW = Centreline of Dividing Wall
 EFPE = External Face of Post and Extension
 EFW = External Face of Wall
 EFWFE = External Face of Wall and Extension
 TCS = Top of Concrete Slab
 TCSE = Top of Concrete Slab and Extension
 TPBE = Top of Pergola Beams and Extension
 UBE = Underside of Balcony and Extension

This cross section applies to PU5, PU6 & PU9

CROSS SECTION M-M'



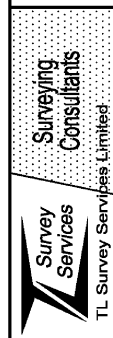
This cross section applies to PU1 - PU4, PU7, PU8, PU10 - PU15

UNITS ON LOT 1 DP 529818
 & Pt. Lot 2 DP 6575

CROSS SECTIONS
 L-L' & M-M'
 SHEET 12 OF 16

DP 548630
 Scale: 1:100 @ A3

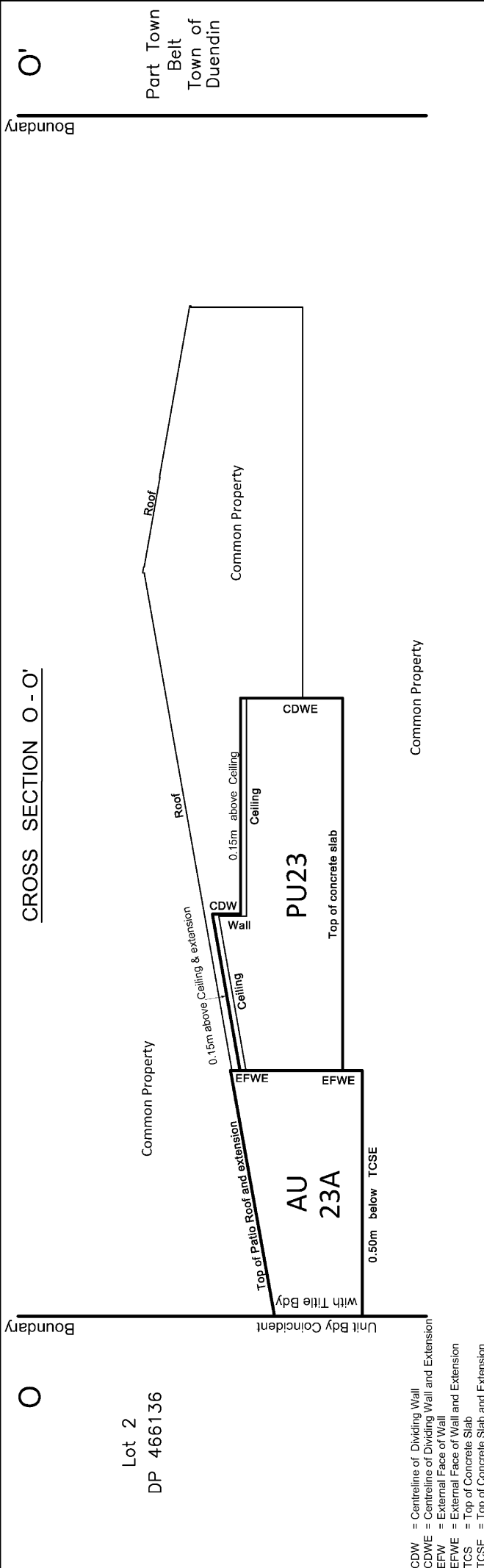
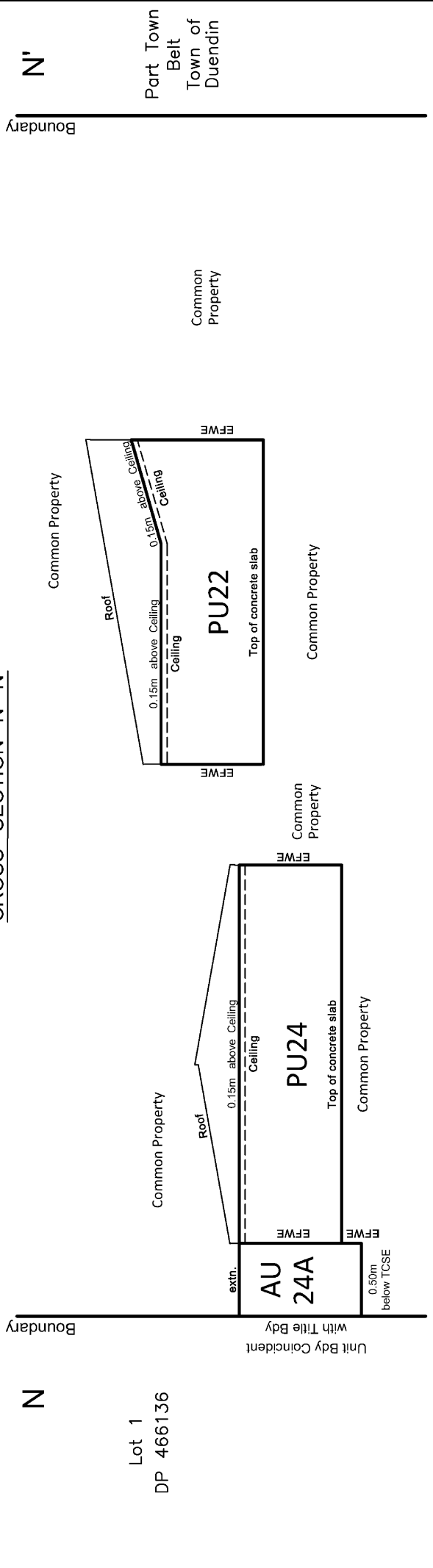
Job No:
 19-194



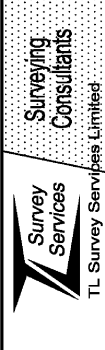
TL Survey Services Limited

SUBJECT TO PART IVA CONSERVATION ACT 1987

CROSS SECTION N - N'



CDW = Centreline of Dividing Wall
 CDWE = Centreline of Dividing Wall and Extension
 EFWE = External Face of Wall
 EFWE = External Face of Wall and Extension
 TCS = Top of Concrete Slab
 TCSE = Top of Concrete Slab and Extension



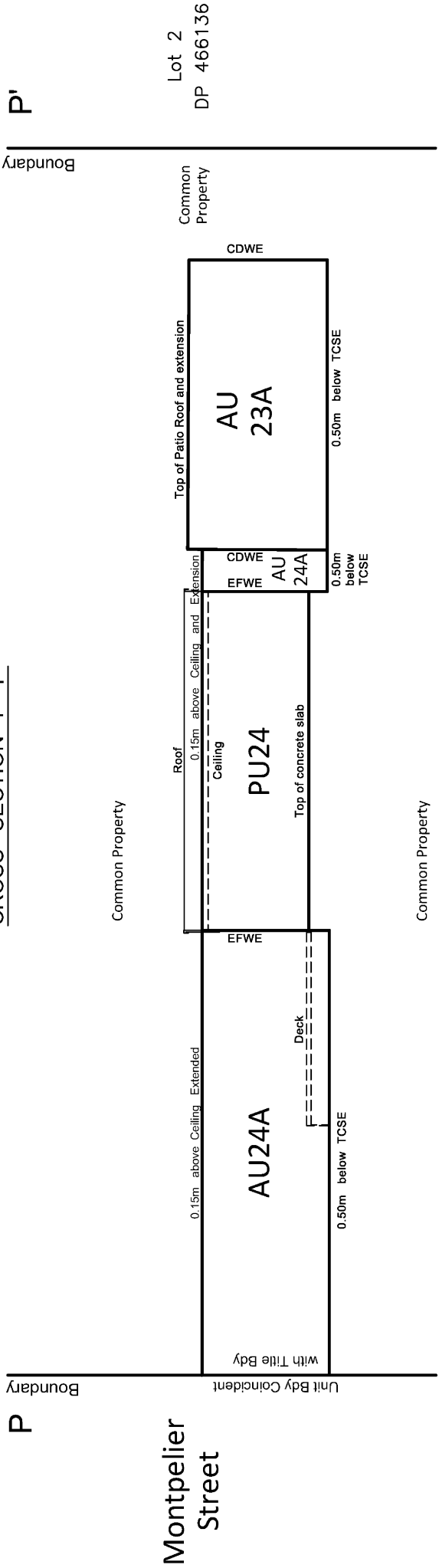
UNITS ON LOT 1 DP 529818
 & Pt. Lot 2 DP 6575

CROSS SECTIONS
 N - N' & O - O'
 SHEET 13 OF 16

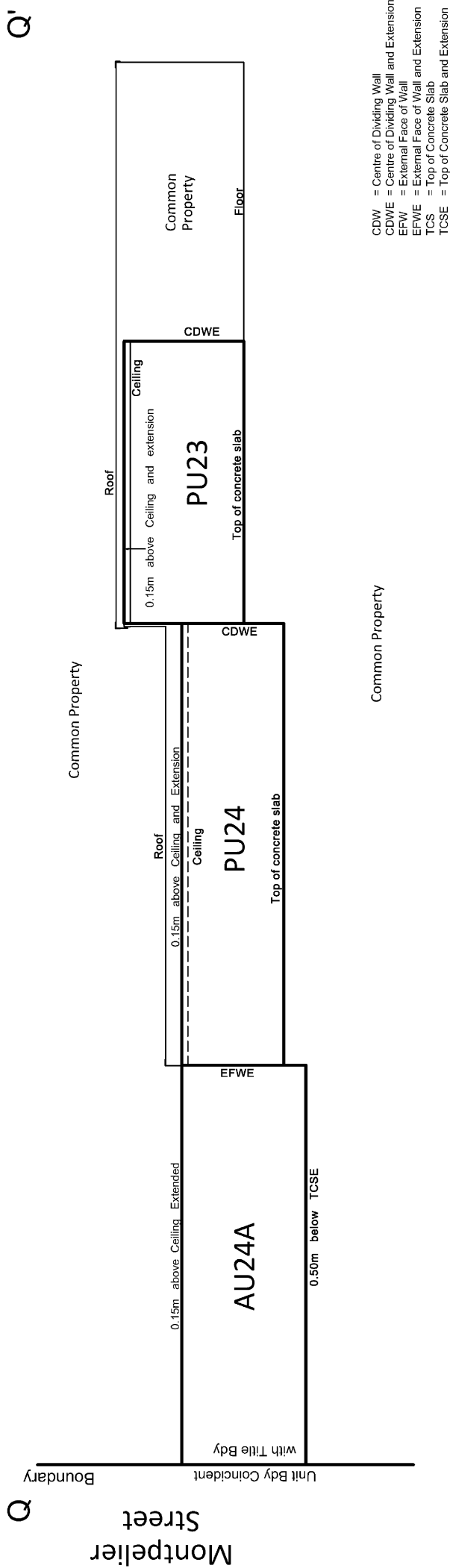
DP 548630
 Scale: 1:100 @ A3
 Job No: 19-194

SUBJECT TO PART IVA CONSERVATION ACT 1987

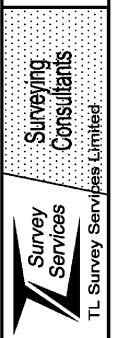
CROSS SECTION P - P'



CROSS SECTION Q - Q'



CDW = Centre of Dividing Wall
 CDWE = Centre of Dividing Wall and Extension
 EFWE = External Face of Wall
 EFWE = External Face of Wall and Extension
 TCS = Top of Concrete Slab
 TCSE = Top of Concrete Slab and Extension



UNITS ON LOT 1 DP 529818
 & Pt. Lot 2 DP 6575

CROSS SECTIONS
 P - P' & Q - Q'
 SHEET 14 OF 16

DP 548630
 Scale: 1:100 @ A3

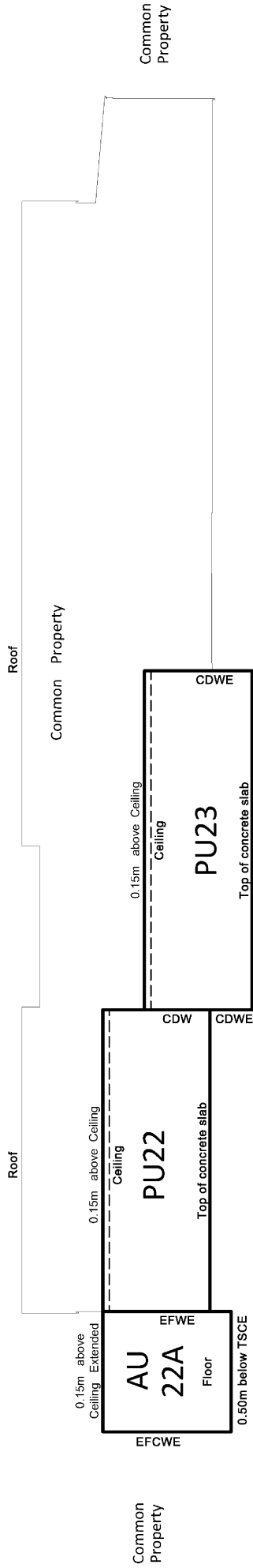
Job No:
 19-194

SUBJECT TO PART IVA CONSERVATION ACT 1987

CROSS SECTION R - R'

R

R'



Common Property

- CDW = Centre of Dividing Wall
- CDWE = Centre of Dividing Wall and Extension
- EFCWE = External Face of Concrete Wall and Extension
- EFW = External Face of Wall
- EFWE = External Face of Wall and Extension
- TCS = Top of Concrete Slab
- TCSE = Top of Concrete Slab and Extension



**Surveying
Consultants**

TL Survey Services Limited

**UNITS ON LOT 1 DP 529818
& Pt. Lot 2 DP 6575**

**CROSS SECTION
M - M'
SHEET 15 OF 16**

DP 548630

Scale: 1:100 @ A3

Job No:
19-194

SUBJECT TO PART IVA CONSERVATION ACT 1987

Alva Street

156°39'42" (62.86)

Part Lot 10 Deeds 270

246°39'42" 30.18

Lot 2
DP 466136

Lot 1
DP 466136

156°39'42" (37.51)

Part Lot 13
Deeds 270

12.57

12.71

157°00'

Building Outline

66°27'20" 23.51

246°39'42" 23.63

High Street

246°39'42" (60.35)

Building Outline

on DP 529818

ⓑ

Montpelier Street

66°39'42" (30.24)

on DP 459515

Ⓒ

336°39'42" 50.33

336°39'42" 50.29

66°39'42" 0.07

Part Town Belt
Town of Duendin

Note: Refer to schedule for Easements and
Covenants as shown above



Surveying
Consultants
TL Survey Services Limited

UNITS ON LOT 1 DP 529818
& Pt. Lot 2 DP 6575

Easement & Covenant
Sheet 16 of 16

DP 548630
Original Scale: 1:300

Job No:
19-147



Units over Lot 1 DP 529818 and Part Lot 2 DP 6575

Schedule of Existing Easements			
Purpose	Shown	Servient Tenement (Burdened Land)	Document
Right to Drain Sewage, Right to Convey Water	G on DP 459515	Part Lot 2 DP 6575	EI 9227809.1

Schedule of Existing Appurtenant Easements			
Purpose	Shown	Servient Tenement (Burdened Land)	Document
Right to Drain Stormwater	A & B on DP 466136	Lot 1 DP 466136	EI 9227809.1
Right to Convey Water, Right to Drain Sewage, Right to Drain Stormwater	B, C & DA on DP 466136		
	DB & E on DP 466136	Lot 2 DP 466136	

Schedule of Existing Land Covenants			
Purpose	Shown	Servient Tenement (Burdened Land)	Document
Land Covenant (Heritage)	B on DP 529818	Lot 1 DP 529818	C 9480250.1